

# VENUE





# The game changer.

Building on its reputation as a segment leader in cabin space, interior comfort, and versatility, VENUE steps up its game with a new 1.0 Kappa T-GDi turbocharged powertrain and advanced safety specifications to deliver game-changing dynamic performance and occupant protection. VENUE offers more of everything you want and need in a subcompact crossover.





Front design



Side design



Rear design

# Smart design.

VENUE adopts smart design principles that magically transform the interior. With its clean, simplified lines, and two-tone interior color scheme, the cabin space feels surprisingly spacious. High-tech details abound such as the Supervision cluster, HD center display, and advanced connectivity features that provide the crowning touch.



## Supervision cluster

Goodbye analog, hello digital! This all-digital instrument cluster is actually a High-Definition Liquid Crystal Display and it presents a wide variety of driving information in crisp and colorful detail.



## Power tilt-and-slide sunroof

On those beautiful days, you can slide open the power-operated sunroof to experience the joys of open-air driving. A sliding sunshade is included to protect you against the sun.



## 8" Display

With its icons and touchscreen interface, this HD display functions like your favorite tablet. It features Bluetooth connectivity to pair with your smartphone so you can access your go-to apps at the touch of a finger.





**60 : 40 Split-folding rear seats**

VENUE's split-folding rear seats add an extra measure of versatility. They're really handy when you have to transport skis, a bicycle or a small piece of furniture.

**Rear package tray**

The package tray does double duty by serving as a storage shelf while discretely concealing the luggage space. As an added bonus, it's easily removable.

# Power when you need it.

Step on the gas pedal, and VENUE's turbocharged Kappa engine serves up all the power you need for quick, effortless take-off. And it comes with the added benefit of outstanding fuel economy. At the touch of a button, you can choose from Normal, Sport or Eco settings with the Drive Mode.

## Kappa 1.0 T-GDi engine

120 Maximum Power  
PS/6,000 rpm

17.5 Maximum Torque  
PS/1,500-4,000 rpm



Normal mode



Eco mode



Sport mode



### Drive Mode selector

With Drive Mode, you'll enjoy a more engaging driving experience tailored to your own personal preference. The Sport setting lengthens the time intervals between gear shifts to deliver sprightly acceleration. Select Eco mode for shorter intervals between gear shifts to help save fuel.



### 7-speed Dual Clutch Automatic Transmission

The new DCT employs two clutches so there is no waiting for the next gear to engage: Gear-to-gear shifts are nearly instantaneous for improved torque transfer. DCT gives you the best of both worlds: the convenience of an automatic gearbox and the dynamic performance of a manual transmission.



### 6-speed manual transmission

VENUE's six-speed manual gearbox delivers smooth and quiet gear shifts to satisfy driving purists who enjoy the manual shifting experience. Clutch action is precise, predictable, and never heavy.

# Safer than ever.

Check out the advanced safety features VENUE offers. You'll be driving with complete peace of mind knowing you and your loved ones are very well protected.



## 6-airbag system (Driver, Passenger, Side & Curtain)

The driver and front passenger are protected by a pair of front airbags to safeguard against head-on collisions while side airbags shield the thorax and pelvic areas. Full-length curtain airbags deliver head protection.



## Static Bending Lights

SBLs overcome the limitation of conventional headlights by lighting up side areas when going around a corner or curve at low speed. They are automatically activated by a turn of the steering wheel.



## Rear view camera with guidelines

No need to twist your neck when parking. The colored guidelines on the screen help you align the vehicle to reduce the risk of nicks, and dents to your bumper.



## Auto cruise control

Auto cruise control is great for highway cruising: It lets you take your foot off the gas pedal to relax your leg muscles. It automatically disengages with a light tap on the brake.



## Tire Pressure Monitoring System

TPMS ends the guesswork about whether your tires are properly inflated. If the pressure drops below the correct setting, a warning icon will flash on the dashboard to alert you.

# Features



15" steel rims with full-size covers

16" alloy wheels



Dark chrome grille



LED MFR headlamps & LED DRLs



Skid plate



Electric folding mirrors



Shark fin antenna



Chrome-coated door handles



Safety windows (Driver)



Roof racks



High-mounted stop lamp



LED rear combination lamp



Full auto air conditioning system



Ambient mood lamp



Child anchor system



Center rear armrest with cup holders



Rear air vent & USB charger (2port)

\* Features and specifications vary by market. Please consult your local dealer.

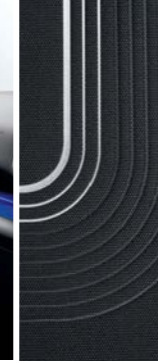
# Interior colors



Grey two-tone (Woven + Point(Woven))



Black one-tone (Woven, Patch + Emboss)



Denim two-tone (Woven, Patch + Emboss)



# Exterior colors

## Body one-tone



<b>PWT</b> Polar White	<b>T2X</b> Typhoon Silver Metallic	<b>R4G</b> Titan Grey Metallic	<b>X5B</b> Phantom Black Pearl	<b>R4R</b> Fiery Red Pearl	<b>TN6</b> Denim Blue Pearl	<b>RR6</b> Fiery Red Pearl + Black Roof	<b>TN3</b> The Denim Pearl + White Roof	<b>TTB</b> Polar White + Black Roof
---------------------------	---------------------------------------	-----------------------------------	-----------------------------------	-------------------------------	--------------------------------	--	--	--

## Roof two-tone



# Specifications

Type		Kappa 1.0T-GDi
Engine type		12-Valve DOHC
Displacement (cc)		998
Max. Power (PS / rpm)		120 / 6,000
Max. Torque (kgf-m / rpm)		17.5 / 1,500-4,000
<b>Brakes</b>		
Front		Ventilated disc type
Rear		Drum brake type
<b>Suspension</b>		
Front		MacPherson Strut
Rear		Coupled Torsion Beam Axle (2WD)
<b>Tire</b>		
		195/65R15, 215/60R16

Dimensions		
Head room (mm)	1st row / 2nd row	1,005 / 985
Leg room (mm)	1st row / 2nd row	1,040 / 905
Shoulder room (mm)	1st row / 2nd row	1,370 / 1,365

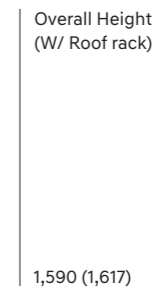
- The above values are based on internal testing results and are subject to change after validation.
- Some of the equipment illustrated or described in this catalog may not be supplied as standard equipment and may be available at extra cost.
- Hyundai Motor Company reserves the right to change specifications and equipment without prior notice.
- The color plates shown may vary slightly from the actual colors due to the limitations of the printing process.
- Please consult your dealer for full information and availability on colors and trims.



Overall Width 1,770



Overall Length 3,995  
Wheel Base 2,500



Overall Height (W/ Roof rack) 1,590 (1,617)



Unit : mm



Dealer stamp