



People's expectation toward individual mobility requires more than just a convenient means of transportation. The old understanding of cars has become outdated. A car represents individuals' lifestyles, and it became an integral part of their lives. At the same time, the automobile industry has experienced seismic change. Hyundai Motor Company has grown rapidly to become one of the largest automakers, backed by world class production capability and superior quality. We have now reached a point where we need a qualitative approach to bring bigger ideas and relevant solutions to our customers. This is an opportunity to move forward and we have developed a new brand slogan that encapsulates our willingness to take a big leap. Led by our new slogan and the new thinking underlying it, we will become a company that keeps challenging itself to unlock new possibilities for people and the planet.

Hyundai Motor Company
<http://worldwide.hyundai.com>
GEN. LHD GLS 1907 ENG. WD
Copyright © 2019 Hyundai Motor Company. All Rights Reserved.





Experience the
future mobility in
your daily life.

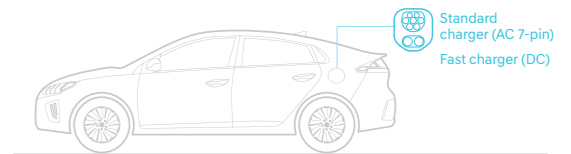
[Welcome to the future.](#)

Leadership in the new era of zero emissions mobility is being realized through our development of innovative green technologies that are continually raising the industry standard for fuel efficiency.



Pulsing with energetic, modern appeal.

Stop and reflect on the appeal of the IONIQ electric. Its refined, modern good looks are the first to grab your attention. Admire every curve, every line: It all comes together to convey the smooth flow of power. The proportions are nicely balanced and when you get in closer to look at the details, you'll discover a perfectionism that is deeply satisfying.



LED DRLs

Count on LEDs for maximum lighting power while drawing a minimal amount of electricity and delivering a longer service life.



Iconic grille

The highly distinctive grille design is a key detail that helps define the futuristic identity of the IONIQ electric while staying true to the rules of good aerodynamics.



Charging port

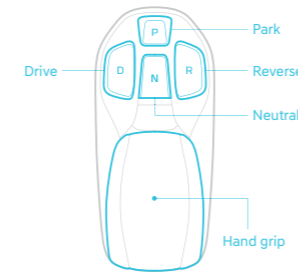
For maximum flexibility, the port offers a choice of recharging modes: Standard or quick charge. Connecting the cable is designed to be safe, secure and simple.



The GLS model with optional equipment is shown here.

Effortlessly elegant & Peace of mind.

With its disciplined focus on layout simplicity and good ergonomics, the IONIQ electric interior advances the evolution of trendsetting design. As forward-thinking as the exterior, the interior abounds with fine touches that bring all the key elements to life in fluid, elegant style. Every detail is precisely designed around the philosophy of clean simplicity for a calming, soothing effect on the senses.



Supervision cluster with 7" color LCD

All vital car system information is presented with astounding legibility and colourful graphic format that only Supervision technology can deliver.



8-inch display audio

IONIQ's nerve center does more than keep you on course and help find the nearest recharging station. It offers total smartphone connectivity through a simple-to-use touchscreen interface.



Electronic gear shift button

Drive-by-wire eliminates mechanical linkages to allow gear shifts with just a click of a button and includes a safety interlocking system. The parking brake is also push button-type.





Cutting edge technologies help keep you safe and hassle-free.

IONIQ electric's safety features befit its sophisticated futuristic styling. Preventive safety innovations incorporate advanced technologies to help keep you on track and out of harm's way. Combining built-in radar, sensors and machine vision, IONIQ electric is at the leading edge of safety technology and will look out for you every inch of the way.

Blind Spot Collision Warning (BCW)

Radar sensors built into the rear bumper will warn of the presence of a vehicle within the blind spot area by issuing an acoustic alarm and flashing an LED icon built into the side view mirrors.

7-airbag system

Seven airbags provide the ultimate safeguard should the unexpected ever happen. Sitting in the front row are a pair of front airbags joined by a pair of side airbags for thorax protection with the driver getting additional shielding from a knee airbag. To defend against side collisions, full-length curtain airbags provide front and second row occupants with head protection.



The GLS model with optional equipment is shown here.

Clean and simple engineering.

Pure electric drive opens the door to a whole new world of simplicity. All-electric mobility means a steep reduction in the number of moving parts the main sources of mechanical noise and vibration. The IONIQ electric's 100kW electric motor runs whisper quiet but perhaps best of all, it's inherently simpler, quicker and more reliable than a conventional gas engine while generating absolutely zero emissions. The regenerative braking system captures braking energy that would otherwise be wasted and uses it to top up the battery power reserve. Paddle shifters allow the driver to override the system's default eco drive setting and to summon full power for quicker performance as the mood or the occasion requires.

Electric Power Control Unit

The brains behind the IONIQ electric, the EPCU makes it all tick. It works quietly behind the scenes performing highly complex tasks that regulate various electrical and electronic systems. You'll probably never need to know about the AC/DC Inverter, Low Voltage DC-DC Converter and the Vehicle Control Unit but these vital sub-systems are there, all working together in perfect harmony under the direction of the EPCU.



Permanent-magnet synchronous motor

Serving up 100kW (120ps) of pure delight, this motor achieves a perfect balance of high efficiency and high power. It has a peak torque rating of 30.1 kgfm (295 Nm) delivered instantly and its entirety the moment you step on the accelerator pedal. And that's certainly part of the fun side of driving the IONIQ electric.



In-Cable Control Box (ICCB) charging cable

This handy cable is stored in the trunk and allows the IONIQ electric to be recharged practically anywhere. It's designed to connect to a standard wall socket and will recharge IONIQ using household AC current.



Special features



Chrome beltline molding



LED headlamps
Chrome IONIQ-badged door scuffs



Safety power window controls

The GLS model with optional equipment is shown here.



Power sunroof with anti-pinch feature
LED rear combination lamps



Heated steering wheel



Driver-only climate control
Electronic parking brake



Smartphone charging system



Rear air ventilation
Paddle shifters (regenerative brake control)



Exterior colors



Polar White (WAW)



Fluidic Metal (M6T)



Electric Shadow (USS)



Phantom Black (NKA)



Iron Gray (YT3)



Intense Blue (YP5)



Fiery Red (PR2)

Interior colours



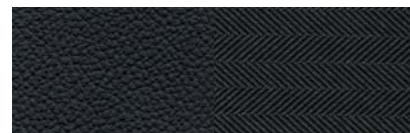
Leather



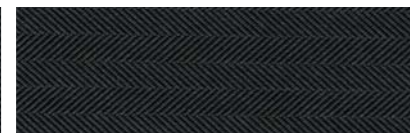
Leather



Leather



Leather + Woven



Woven

Wheels



16" alloy wheels

Specifications

ELECTRIC MOTOR

Type	Permanent-magnet synchronous motor (PMSM)
Max. power (kW)	100
Max. torque (Nm)	295
Battery capacity (kWh)	38.3

DIMENSIONS

Head room (mm)	Front / rear (w/o sunroof)	994 / 950
Leg room (mm)	Front / rear	1,073 / 906
Shoulder room (mm)	Front / rear	1,425 / 1,396
Luggage capacity (ℓ)	Up to roof	455
	Rear seats down, up to roof	1,410

- The above values are results from internal testing and are subject to change after validation.
- Some of the equipment illustrated or described in this catalog may not be supplied as standard equipment and may be available at extra cost.
- Hyundai Motor Company reserves the right to change specifications and equipment without prior notice.
- The color plates shown may vary slightly from the actual colors due to the limitations of the printing process.
- Please consult your dealer for full information and availability on colors and trims.



Wheel tread 1,552
Overall width 1,820



Wheel base 2,700
Overall length 4,470

Overall height
1,475



Wheel tread 1,564

Unit : mm