

# SANTA FE





More details

# Open for More

Open new doors with the all-new SANTA FE, the perfect blend of bold allure and magnetic attraction to adventure that makes every journey extraordinary.

# Refined & Robust

A solid and unique presence with an impressive side profile - radiating rugged strength and refined craftsmanship.



# Exterior

Stylishly robust from all angles, the all-new SANTA FE features prominently glowing H-lights, adding a unique touch to a boldly sculpted yet seamless body.



H-lights (LED/Projection type) Head Lamps



21-inch Alloy Wheels / Sharp Fenders



Hidden-type Assist Handle / Quarter Glass



LED Rear Combination Lamps



Bridge-type Roof Rail / Dual Sunroof

Lift open the full, wide tailgate to connect the indoors with the outdoors, expanding your everyday experiences.



Wide Tailgate Opening (Power Opening)



# Interior

Designed to establish a calming and relaxed ambience, the well-balanced interior presents an exceptional comfort.



Front Relaxation Seat with Legrest



Ambient Mood Lamp  
Nappa Leather Seat



Panoramic Curved Display 12.3-inch (Cluster) + 12.3-inch (AVNT)

The all-new SANTA FE provides an accommodating selection of seating - ensuring that even your backstage moments are flexible and open for more.



6-Seater



5-Seater



6-Seater



7-Seater



2nd-row Fold-and-Dive



2nd-row Power Reclining Captain Seat (6 Seats)  
One-touch Walk-in



# Convenience

The variety of storage spaces was meticulously selected to upgrade your journey.



Bilateral Multi-Console



Front Upper-tray  
Under Floor Box



Dual Wireless Charger  
Rear Lower-tray

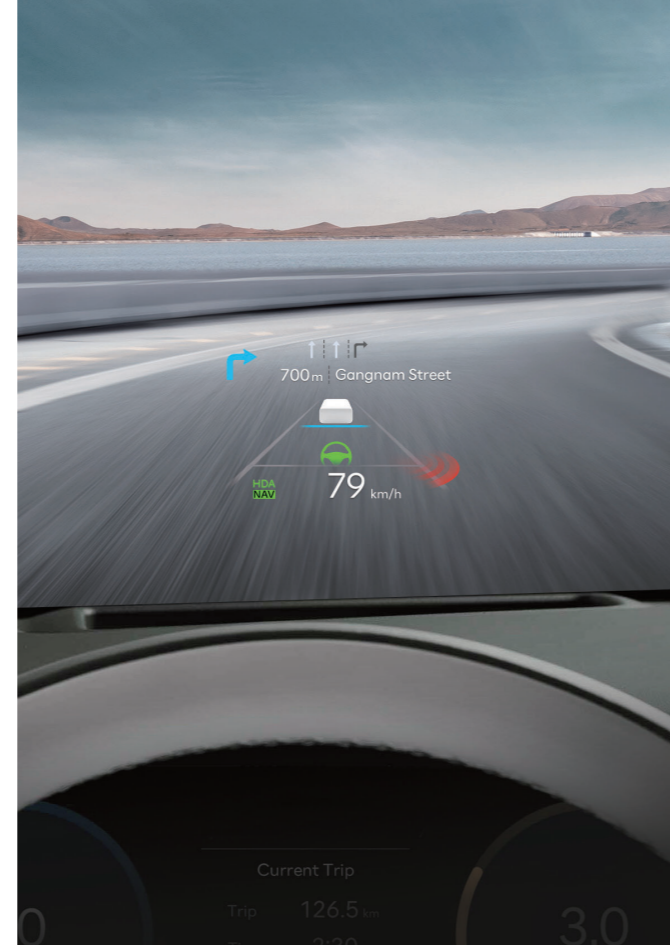


UV-C Sterilization Multi-tray

The ideal curation of cutting-edge technology will enrich the quality of your rides.



Digital Center Mirror (Full-Display Rearview Mirror)



12-inch Head-up Display (HUD)



BOSE Premium Sound System  
Digital Key 2



Auto Temp. Control (Dual)

# Performance

HTRAC all wheel drive capabilities, combined with multi-terrain control modes, give you absolute confidence on the road.

**Smartstream Gasoline  
2.5 GDI Engine** 194 Maximum Power  
PS/6,100 rpm 25.1 Maximum Torque  
kgf-m/4,000 rpm

**Smartstream Gasoline  
2.5 T-GDI Engine** 281 Maximum Power  
PS/5,800 rpm 43.0 Maximum Torque  
kgf-m/1,700-4,000 rpm



**4WD HTRAC**  
SANTA FE AWD provides optimal driving performance through actively distributing driving force to the front and rear wheels according to various driving situations.



**Drive Mode / Terrain Mode (Auto, Mud, Sand, Snow)**

# Hybrid / Plug-in Hybrid

Enjoy a smoother ride and dependable responsiveness with the all-new SANTA FE's hybrid and plug-in hybrid solutions.

## e-Comfort Drive



When passing speed bumps, this hybrid technology manages the motor to reduce vehicle shaking and provide a smooth ride on an uneven road.

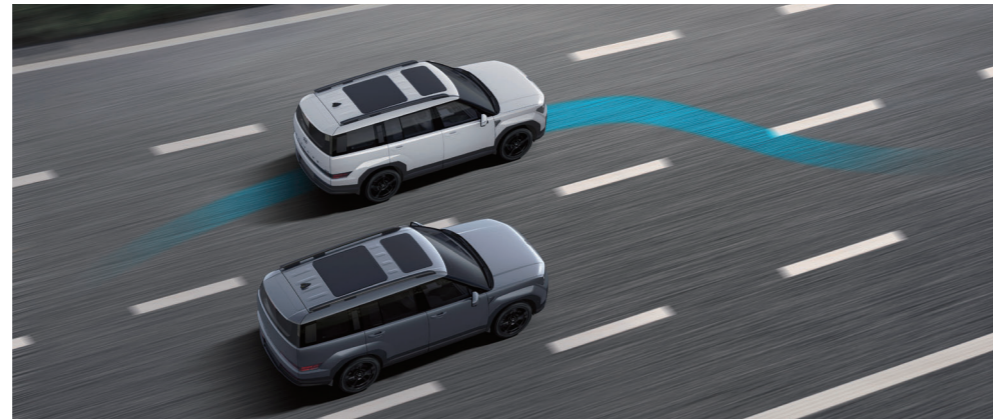


When accelerating, the hybrid system controls the vehicle's motion such that the driver experiences less shaking and more linear acceleration.

## e-Dynamic Drive



When the vehicle approaches a turn, the hybrid system regulates the vehicle's movement to execute torque vectoring while simultaneously maintaining the ideal level of tire grip for dynamic handling performance.



During overtaking acceleration, this function provides a quick acceleration response and improved torque performance.

### Smartstream Gasoline 1.6 T-GDI Hybrid Engine

Engine 160 Maximum Power PS/5,500 rpm 27.0 Maximum Torque kgf-m/1,500-3,500 rpm

Electric Motor 47.7 Maximum Power KW 264 Maximum Torque Nm

### Smartstream Gasoline 1.6 T-GDI Plug-in Hybrid Engine

Engine 160 Maximum Power PS/5,500 rpm 27.0 Maximum Torque kgf-m/1,500-3,500 rpm

Electric Motor 72.0 Maximum Power KW 304 Maximum Torque Nm



Hybrid Model (Calligraphy)

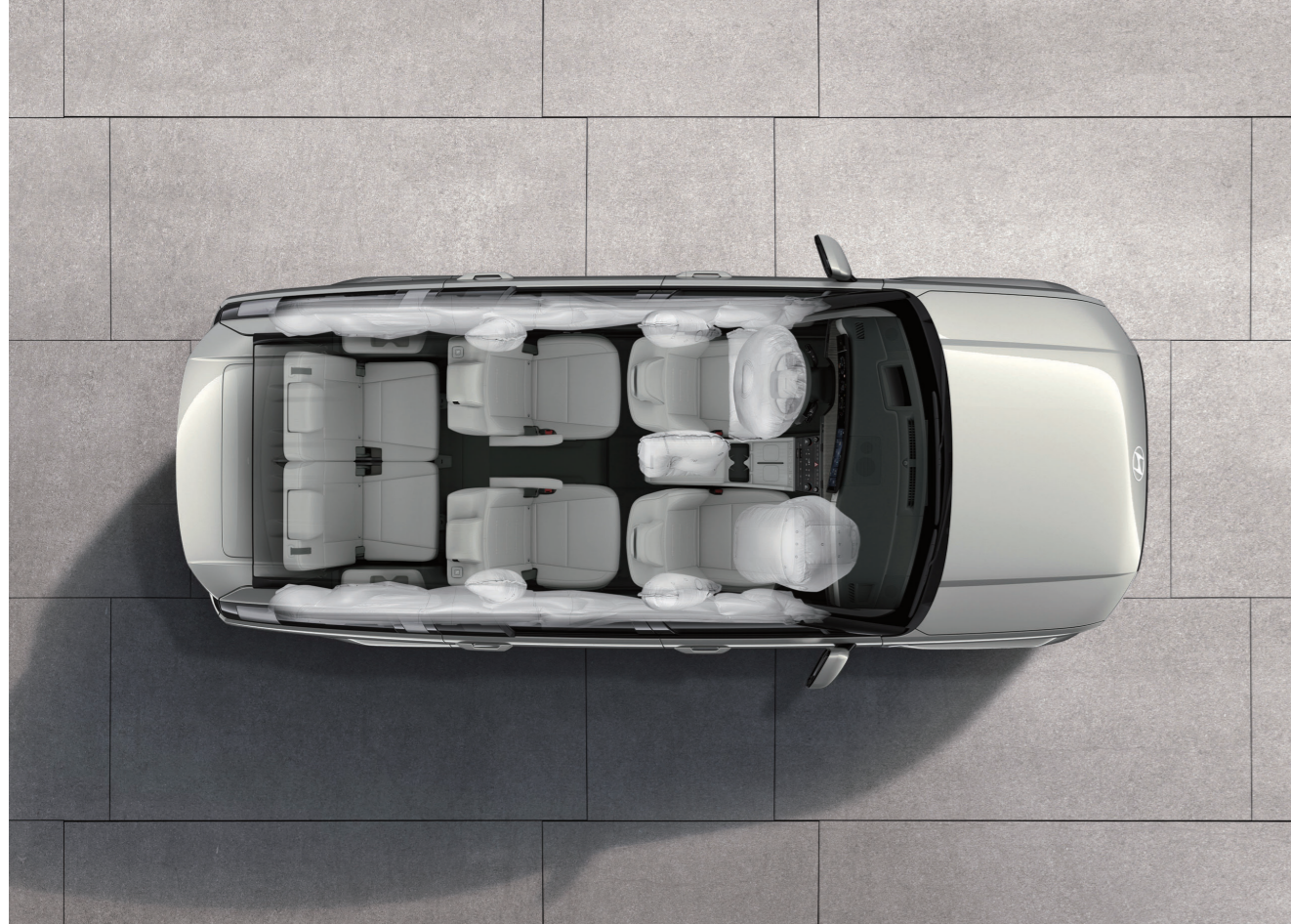


Paddle Shift-Regenerative Braking Mode Plug-in Hybrid charging port

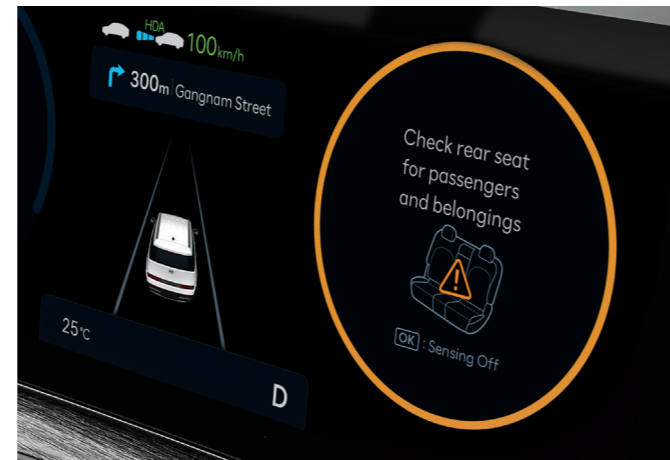
\* Engine and motor specifications may vary based on regional regulations. Please consult your local dealer.

# Safety

The latest enhancements in safety will keep your family safe and sound in both daily and unexpected scenarios.



10 Airbags



Blind-Spot View Monitor (BVM)  
Advanced Rear Occupant Alert (Advanced ROA)



Haptic Steering Wheel



Surround View Monitor (SVM)

# Hyundai SmartSense



More details



## Forward Collision-Avoidance Assist 2 (FCA 2)

Forward Collision-Avoidance Assist 2 (FCA 2) monitors your surroundings and warns you if there is a risk of collision. After the warning, it automatically assists with emergency braking if the risk of collision increases – with an oncoming vehicle or PTW while turning left at an intersection, with an oncoming vehicle from the left or right, or while driving down the lane. It automatically assists with avoidance steering if there is a risk of collision with an oncoming/preceding vehicle or PTW in the next lane-while changing lanes, a vehicle/PTW/pedestrian/cyclist partially in the vehicle's intended path while driving, or a rear side vehicle/PTW when changing lanes.



## Lane Following Assist 2 (LFA 2)

Lane Following Assist 2 (LFA 2) helps center the vehicle in the lane. The control performance has been improved, and the steering actuator control method has changed from torque control to steering angle control. Also, by additionally applying a direct Hands-On Detection (HOD) Sensor to the existing torque sensor recognition method, the performance to determine whether the driver is holding the steering wheel has been improved.



## Parking Collision Avoidance Assist (PCA)

Reverse Parking Collision Avoidance Assist (PCA) provides a warning if there is a risk of collision with a rear object while reversing. After the warning, if the risk of collision increases, it automatically assists with emergency braking.



## High Beam Assist (HBA)

High Beam Assist (HBA) detects the ambient light illuminance, such as a lamp of an oncoming vehicle or a preceding vehicle, and it automatically adjusts the high beams.

\* Advanced Driver Assistance Systems (ADAS) is designed to provide assistance with the operation of a vehicle, drivers must drive with caution at all times.

\* Functions may not operate depending on the surroundings and driving conditions. Refer to the instruction manual for details.

26 \* Actual specifications may vary depending on the trim, powertrain and specifications selected.

\* Advanced Driver Assistance Systems (ADAS) is designed to provide assistance with the operation of a vehicle, drivers must drive with caution at all times.

\* Functions may not operate depending on the surroundings and driving conditions. Refer to the instruction manual for details.

\* Actual specifications may vary depending on the trim, powertrain and specifications selected.



More details



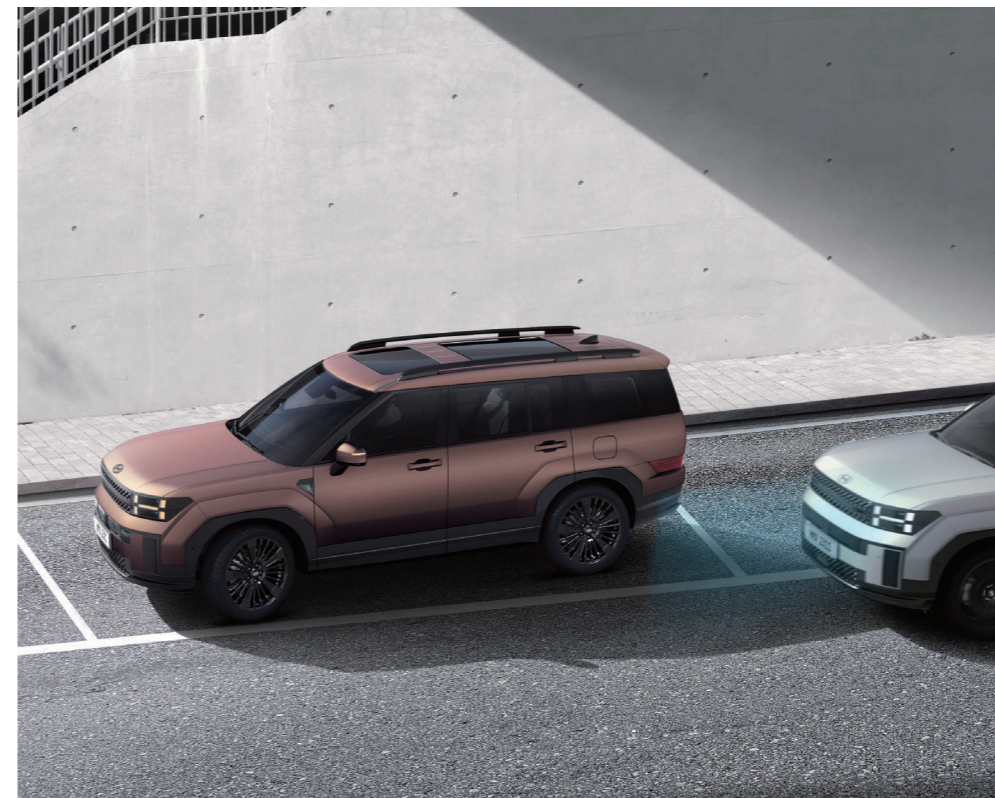
**Smart Cruise Control (SCC)**

Smart Cruise Control (SCC) helps maintain distance from the front vehicle and drive at a speed set by the driver. Automatically stops when the front vehicle stops and automatically starts when the front vehicle departs within a short time. When SCC is activated, it drives automatically, reflecting the learned driving style. When SCC is inactive (Off/Standby), it learns the driver's driving style (inter-vehicle distance, acceleration, and reaction speed).



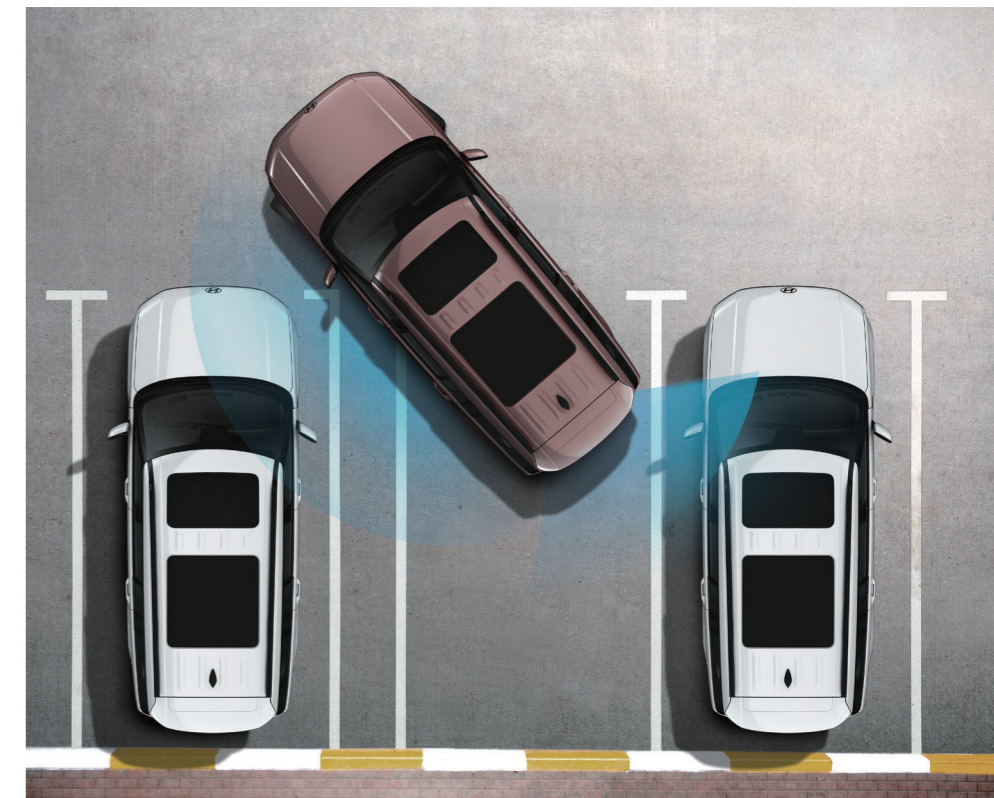
**Remote Smart Parking Assist (RSPA)**

Remote Smart Parking Assist (RSPA) helps remotely park or exit a parking spot. It automatically assists with steering, accelerating, decelerating, and shifting using the vehicle's sensors. It automatically assists with braking when an object is detected in the vehicle's path. The driver can perform 'Remote Operation' using the smart key when the driver is outside the vehicle.



**Blind-Spot Collision-Avoidance Assist (BCA)**

Blind-Spot Collision-Avoidance Assist (BCA) warns you if there is a risk of collision with a rear side vehicle in the blind-spot while changing lanes. When forward exiting a parallel-parking spot, if there is a risk of collision with a vehicle approaching from behind, it automatically assists with emergency braking.



**Forward/Side/Reverse Parking Distance Warning (PDW)**

Forward/Side/Reverse Parking Distance Warning (PDW) warns against collisions with objects around the vehicle at low speeds.

\* Advanced Driver Assistance Systems (ADAS) is designed to provide assistance with the operation of a vehicle, drivers must drive with caution at all times.

\* Functions may not operate depending on the surroundings and driving conditions. Refer to the instruction manual for details.

\* Actual specifications may vary depending on the trim, powertrain and specifications selected.

\* Advanced Driver Assistance Systems (ADAS) is designed to provide assistance with the operation of a vehicle, drivers must drive with caution at all times.

\* Functions may not operate depending on the surroundings and driving conditions. Refer to the instruction manual for details.

\* Actual specifications may vary depending on the trim, powertrain and specifications selected.

# Features



18" alloy wheels  
(Standard)



18" alloy wheels  
(Hybrid)



20" alloy wheels  
(Optional)



20" alloy wheels  
(Hybrid / Plug-in Hybrid Calligraphy)



21" alloy wheels  
(Calligraphy)



Standard



Calligraphy



Full LED Headlamps (MFR Type)



Radiator & Intake Grille



Black Cladding



Bridge-type Roof Rail / Dual Sunroof



Smart Power Tailgate (Height Adjustable)



4.2-Inch Color LCD Cluster



Smartphone Wireless Charger (Single)



Electronic Parking Brake (EPB)



Integrated Memory Seat



3rd-row Air Vent



Full LED Headlamps (Projection Type)



Radiator & Intake Grille (Calligraphy)



Black High-Gloss Cladding (Calligraphy)



Hidden-type Assist Handle (Calligraphy)



Black Anodizing Emblem (H-Logo / Lettering)



12.3-Inch Color LCD Cluster



Front Heated and Ventilated Seats



Column-type Shift by Wire (SBW)



Passenger Seat Walk-In Device

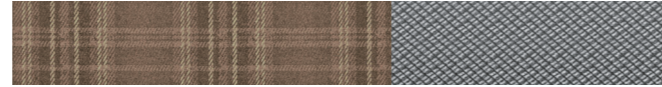
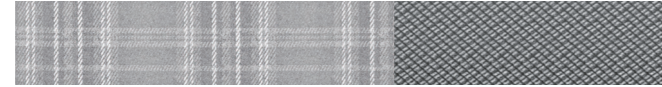


2nd row Manual Door Curtain



# Interior colors

## Standard



Black monotone cloth / Metal pattern garnish

Supersonic gray cloth / Metal pattern garnish

Pecan brown cloth / Metal pattern garnish

## Optional



Black monotone leather / Charcoal black oak garnish

Supersonic gray leather / Ash gray oak garnish

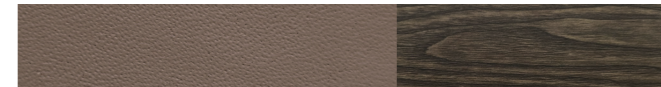
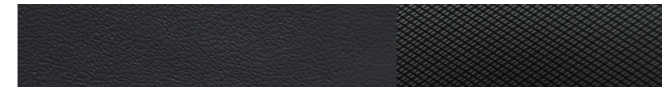
Pecan brown leather / Natural serenity oak garnish

Forest green leather / Eucalyptus stripe light garnish

## Color combination chart

Trim			Exterior									
	Interior		Creamy white pearl (WW2)	Typhoon silver metallic (T2X)	Cyber sage pearl (RS2)	Ocado green pearl (RN2)	Pebble blue pearl (PB2)	Terracotta orange solid (ZGE)	Magnetic gray metallic (M2F)	Abyss black pearl (A2B)	Creamy white matte (WWM)	Earthy brass metallic matte (YBM)
Standard	Black monotone cloth		●	●	●	●	●	●	●	●	●	●
	Supersonic gray cloth		●	●	●	●	●	●	●	●	●	●
	Pecan brown cloth		●	●	●	-	-	●	●	●	●	●
Optional	Black monotone leather		●	●	●	●	●	●	●	●	●	●
	Supersonic gray leather		●	●	●	●	●	●	●	●	●	●
	Pecan brown leather		●	●	●	-	-	●	●	●	●	●
	Forest green Leather		●	●	●	●	-	●	●	●	●	●
Calligraphy	Black monotone nappa leather		●	●	●	●	●	●	●	●	●	●
	Pecan brown nappa leather		●	●	●	-	-	●	●	●	●	●
	Forest green nappa leather		●	●	●	●	-	●	●	●	●	●

## Calligraphy



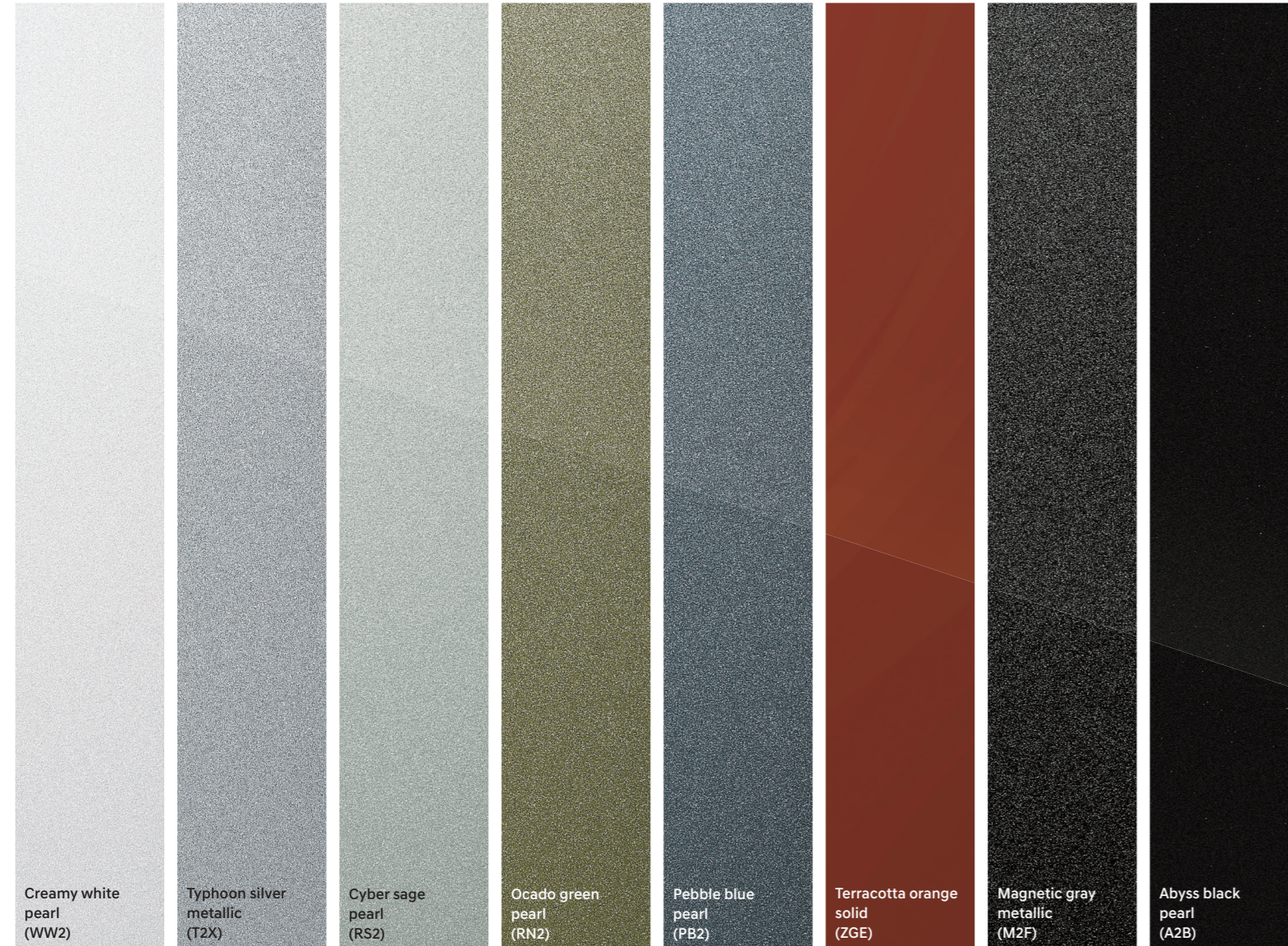
Black monotone nappa leather / Black ink metal garnish

Pecan brown nappa leather / Natural serenity oak garnish

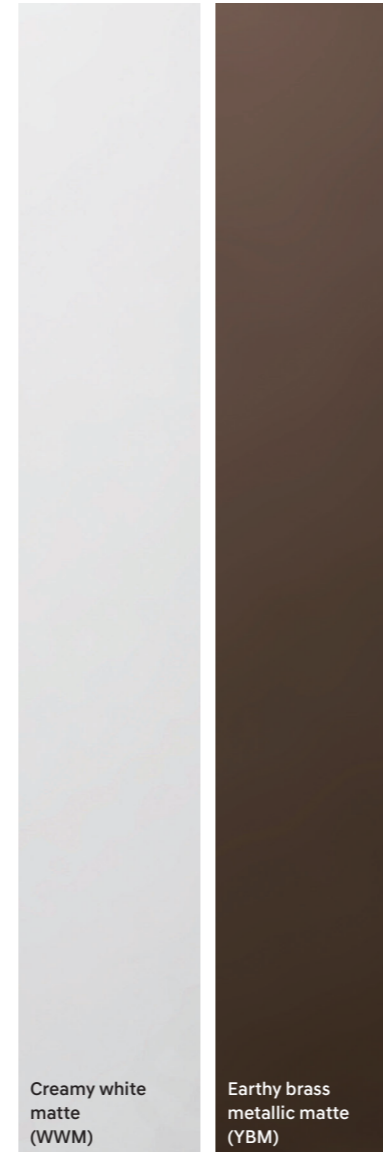
Forest green nappa leather / Eucalyptus stripe light garnish

# Exterior colors

## Pearl / Metallic / Solid colors



## Matte colors



# Specifications

Classification		Smartstream G2.5 GDi	Smartstream G2.5 T-GDi	Smartstream G1.6 T-GDi HEV	Smartstream G1.6 T-GDi PHEV
Engine	Type	2.5 GDi	2.5 Turbo GDi	1.6 T-GDi Hybrid	1.6 T-GDi Plug-in Hybrid
	Displacement (cc)	2,497	2,497	1,598	1,598
	Max. Power (PS / rpm)	194 / 6,100	281 / 5,800	160 / 5,500	160 / 5,500
	Max. Torque (kgf-m / rpm)	25.1 / 4,000	43.0 / 1,700-4,000	27.0 / 1,500-3,500	27.0 / 1,500-3,500
Motor	Max. Power (kW)	-	-	47.7	72.0
	Max. Torque (Nm)	-	-	264	304
Suspension					
Front			McPherson Strut Type		
Rear			Multi-Link Type		
Tire					
		235/60R18, 255/45R20, 245/45R21	235/60R18, 255/45R20, 245/45R21	235/60R18, 255/45R20	255/45R20
Dimensions					
Head Room (mm)	1st row (w/Sunroof) / 2nd row (w/Sunroof) / 3rd row		1,045 (1,020) / 1,030 (1,007) / 958		
Leg Room (mm)	1st row / 2nd row (Hybrid) / 3rd row		1,052 / 1,075 (1,055) / 761		
Shoulder Room (mm)	1st row / 2nd row / 3rd row		1,511 / 1,475 / 1,360		

- The above values are results from internal testing and are subject to change after validation.
- Some of the equipment illustrated or described in this catalog may not be supplied as standard equipment and may be available at extra cost.
- Hyundai Motor Company reserves the right to change specifications and equipment without prior notice.
- The color plates shown may vary slightly from the actual colors due to the limitations of the printing process.
- Please consult your dealer for full information and availability on colors and trims.



Wheel tread (21" Wheel)\* 1,643  
Overall width 1,900



Wheelbase 2,815  
Overall length 4,830

Overall height (Roof rack)

1,730 (1,780)\*



Wheel tread (21" Wheel)\* 1,653

Unit : mm \* Wheel tread • 18" Wheel (Front/Rear) : 1,646/1,656 • 20" Wheel (Front/Rear) : 1,637/1,647  
\* Standard Overall height (Roof rack) : 1,720 (1,770)

Dealer stamp