

# Crane Truck



- Stiff Crane Truck
- Knuckle Crane Truck
- Crane
- Wrecker Truck



# Stiff Crane Truck

- Hyundai Stiff Crane Trucks are efficient at moving iron, stone or sand around construction sites. The extensible boom and slewing system make them suitable for high-rise or heavy-weight work, too.
- The Crane Trucks differ in lifting capacity and working radius, offering choice for different job requirements.



HD65 4x2

Vehicle	Engine	D4AF, D4AL, D4DC, D4BB, D4DB-d		
	Wheel Base	Short : 2,750mm		Long : 3,570mm
	Dimension	5,245 x 2,030 x 2,670		6,465 x 2,030 x 2,670
Crane	Weight	335kg		
	Lifting Capa. / Outreach	2.30ton / 1.5m	0.88ton / 3.7m	0.52ton / 6.0m
	Rotation Angle	330°		



HD120 4x2

Vehicle	Engine	D6BR, D6GA		
	Wheel Base	Long : 4,895mm		
	Dimension	8,620 x 2,400 x 3,700		
Crane	Weight	2,860kg		
	Lifting Capa. / Outreach	6.5ton / 2.0m	2.27ton / 6.0m	0.3ton / 18.7m
	Rotation Angle	360°		



XCIENT 6x4

Vehicle	Engine	D6AC / D6CB		
	Wheel Base	Long : 6,950 (5,650+1,300)mm		
	Dimension	11,610 x 2,495 x 3,800		
Crane	Weight	4,200kg		
	Lifting Capa. / Outreach	10.0ton / 2.0m	2.28ton / 10.1m	0.65ton / 20.3m
	Rotation Angle	360°		



HD320 8x4

Vehicle	Engine	D6AC, D6CA3H, D6CB3H, D6CB41		
	Wheel Base	Extra Long : 7,850mm		
	Dimension	12,245 x 2,495 x 3,530		
Crane	Weight	5,060kg		
	Lifting Capa. / Outreach	10.0ton / 2.0m	3.17ton / 8.72m	1.2ton / 19.6m
	Rotation Angle	360°		

# Knuckle Crane Truck

- Hyundai Knuckle Crane Trucks offer an easy way of picking up and transporting recycled waste paper or scrap iron by using a grapple attached to the tip of the crane.
- The HD 120 model is usually paired with the HIAB-10000, which is positioned behind the cargo deck to ensure maximum work efficiency.



HD120 4x2

Vehicle	Engine	D6BR, D6GA		
	Wheel Base	Exter Long : 4,895mm		
	Dimension	8,820 x 2,440 x 3,360		
Crane	Weight	1,650kg		
	Lifting Capa. / Outreach	4.15ton / 2.3m	2.31ton / 4.2m	1.2ton / 7.6m
	Rotation Angle	400°		
	Outrigger Span	4.6m		



HD260 6x4

Vehicle	Engine	D6AC, D6CB3H		
	Wheel Base	Long : 6,950 (5,650+1,300)mm		
	Dimension	11,810 x 2,505 x 3,435		
Crane	Weight	2,100kg		
	Lifting Capa. / Outreach	5.5ton / 2.5m	2.72ton / 5.0m	1.53ton / 8.6m
	Rotation Angle	410°		
	Outrigger Span	4.75m		

## Standard Configuration



High Tension Steel Plates



Control Seat



Large Capacity Crane (Include Grapple)



Pusher Axle

## Knuckle Crane



033-2CLX



044-2CLX

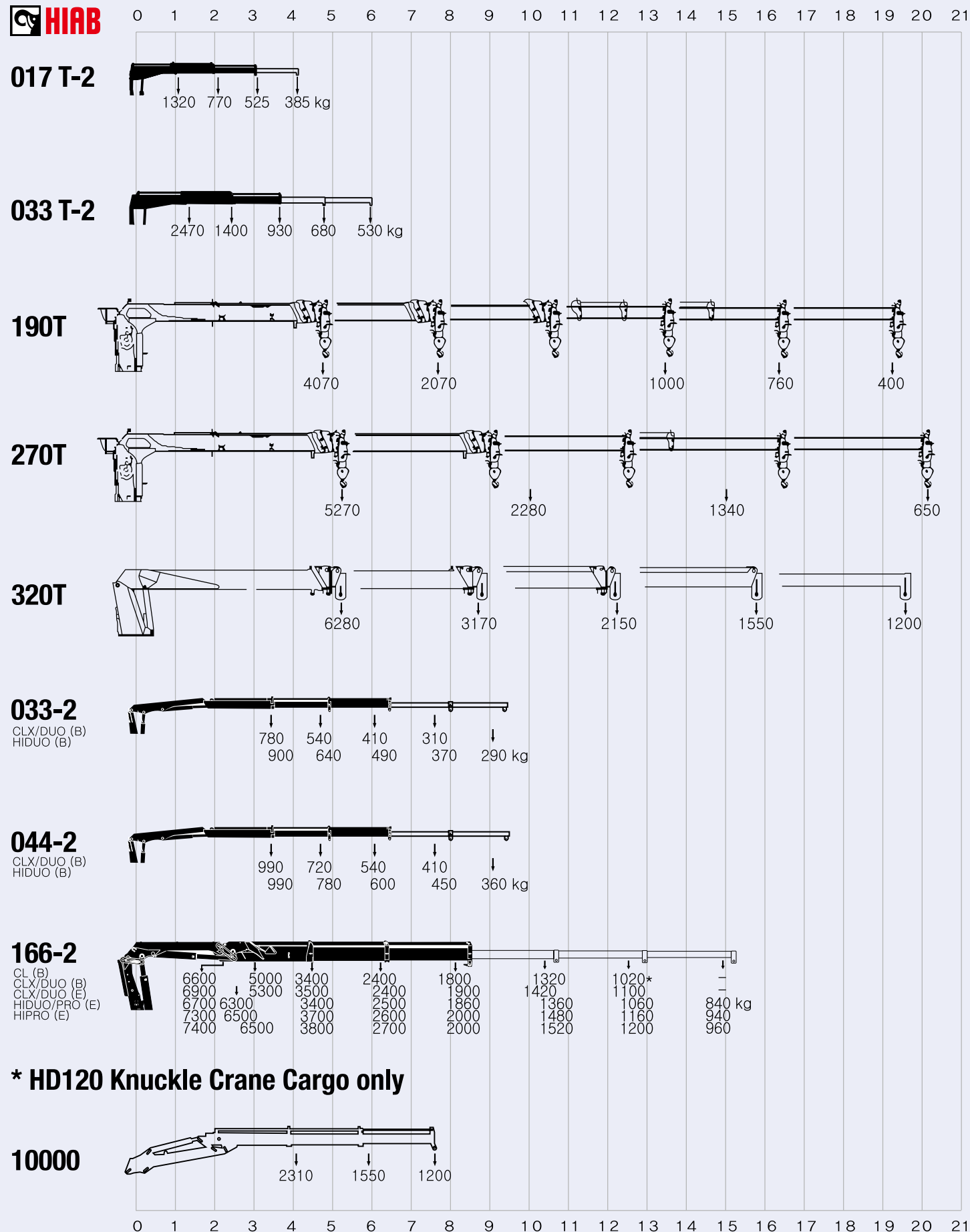


055-2CLX



166-2CLX

# Crane



# Wrecker Truck

- Hyundai Wreckers are a great solution for towing vehicles – illegally parked or broken down. Securing the vehicle to the tow hitch device is all it takes. The Wreckers can also rescue vehicles sunken underwater or fallen off a cliff by using their extensible boom cranes.
- The horizontal outrigger keeps the wrecker truck securely in balance, a feature most appreciable in the case of rescue operations. The Wreckers can be mounted with the optional winch package comprising an auxiliary winch and a rear outrigger.

HD65 4x2



Vehicle	Engine	D4AF, D4AL
	Wheel Base	Short : 2,750mm
	Dimension	5,110 x 2,000 x 2,730
Body	Crane	Capacity Working Radius Boom Length
		2,020 kg at 2m 6.2m 6.4m
	Outrigger	Operation Width
		Manual Pull-out and Hydraulic Extension Front : 3m, Rear : Option
	Hydraulic Pump	Gear Type, 31cc/rev

HD72 4x2



Vehicle	Engine	D4AF, D4DC, D4DB, D4DB-d, D4DD
	Wheel Base	Short : 2,750mm
	Dimension	5,110 x 2,000 x 2,825
Body	Crane	Capacity Working Radius Boom Length
		2,930kg at 2.5m 6.2m 6.55m
	Outrigger	Operation Width
		Manual Pull-out and Hydraulic Extension Front : 3m, Rear : Option
	Hydraulic Pump	Gear Type, 31cc/rev

HD120 4x2



Vehicle	Engine	D6BR, D6GA
	Wheel Base	Short : 3,795mm
	Dimension	6,770 x 2,195 x 2,910
Body	Crane	Capacity Working Radius Boom Length
		2,930kg at 2.5m 7.4m 7.6m
	Outrigger	Operation Width
		Manual Pull-out and Hydraulic Extension Front : 3m, Rear : Option
	Hydraulic Pump	Gear Type, 31cc/rev

HD260 6x4



Vehicle	Engine	D6AC, D6CB3H
	Wheel Base	Medium : 6,100(4,800+1,300)mm
	Dimension	10,095 x 2,495 x 3,600
Body	Crane	Capacity Working Radius Boom Length
		10,000kg at 2m 10m 10.75m
	Outrigger	Operation Width
		Automatic Hydraulic Pull-out and Extension Front : 4.3m, Rear : 4.3m
	Hydraulic Pump	Gear Type, 31cc/rev