

STARIA





STARIA

Introducing the STARIA Tourer ideal for multiple passengers and STARIA Cargo for added cargo space.

Whatever your lifestyle, STARIA is guaranteed to satisfy your needs.

- Staria Tourer 9 or 11 Seater
- Staria Cargo 3 or 5 Seater
- Staria Kinder
- Staria Ambulance/Firefighting EMS Ambulance
- Staria Wheelchair Lift

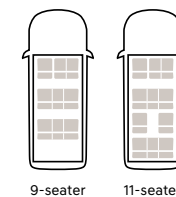
Tourer

A futuristic design with plenty of room and
a wide range of features to accentuate a whole new lifestyle.



The sensuous single-curve contour and wide stance of STARIA Tourer 9-seater Modern Full Option(Shimmering Silver Metallic)

From your daily routine to taking care of work and business, you will find yourself delighted however you wish to utilize STARIA.



Driver-centered high-tech features of STARIA Tourer 9-seater Modern Full Option(Beige)



STARIA Tourer 9-seater Modern(Beige)
 STARIA Tourer 11-seater Smart(Black Monotone)



Full-flat Rear Seats

The rear seats can be folded for a roomier and more private space while extended luggage can be loaded comfortably.

* There is an empty slot in the middle of the 3rd row seats. Please use caution when folding the seats into full-flat mode.



Rear Long Sliding Seats(11-seater)

Rear seats can be slid forward or backward to allow passengers to enter or exit the vehicle with ease or secure more cargo space.



Cushion Tip-up Seats

The seats in the final row come with tip-up capability for even greater, partitioned use of cargo space.

Rear Seat View / Rear Seat Communication

The microphone and camera installed inside enable monitoring of and communication with rear passengers.

* Rear seat view is available only when parked.



Smart Power Sliding Door

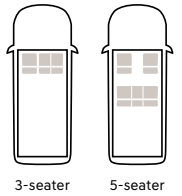
If the driver stands near the vehicle door for a period of time with the digital key, the door slides open automatically without needing to press a single button.

Cargo

STARIA Cargo 3-seater with plenty of cargo space and 5-seater for multiple passengers - your ideal automotive partner.



Loading and unloading made easier through the raised overall height and the lowered floor of STARIA 5-seater Modern Full Option(Abyss Black Pearl)



5-seats

STARIA comes with a 3rd generation platform that offers easier loading/unloading and improved passenger comfort and secures optimal cabin space for diverse uses.



Smart Power Tailgate(Away Close Tailgate)

The tailgate opens automatically when the driver stands near the rear of the vehicle, and closes when the person walks away.



Twin Swing Doors

The easy-to-open twin swing doors allow easier loading and unloading of larger objects.

STARIA Kinder

STARIA Kinder

STARIA Kinder sets the standard for school vans, by providing a safe and convenient way for children to get to and from school.



STARIA Kinder 15-seater(LPG)

STARIA Kinder



Child seat configuration(15-seater)

A seat developed exclusively to suit the physical characteristics of children, with child safety as the top priority.



Normal seat configuration(11-seater)

Synthetic leather seats, 2nd-4th row long sliding seats, 2nd-4th row full flat seats, 2nd row 6:4 split seats(reclining/folding), 3rd row independent seats(reclining/folding/with armrests), 4th row cushion tip-up seats(can be folded)

STARIA Kinder



STARIA Intelligent Safety Features

Features STARIA'S enhanced intelligent safety features to ensure child safety.



Smart Power Sliding Doors/Safe Exit Assist(Optional)

The automatic door function makes it easy to get in and out of the vehicle. When a vehicle approaching from the rear is detected when the door is being opened, the sliding door remains closed, and a warning alarm is sounded to help kids alight from the vehicle safely.

STARIA Kinder



Warning Light

When children get in and out of the vehicle, the warning lights flash brightly on the front and rear of the vehicle to encourage everyone in the vicinity to exercise caution.

Electric Side-step

The side-step automatically deploys when the sliding door is opened or closed, making it more convenient and safer for children to get in and out of the vehicle.

※ When children are on board, seat belts must be adjusted and fastened to fit each individual passenger's body. For infants and toddlers, an appropriate child safety seat must be used at all times.



3-point Height-adjustable Seat Belt(15-seater)

Enjoy enhanced safety with 3-point seat belts that can be adjusted up and down to fit the height of child occupants.



Child On Board Alarm

This alarm allows the driver to check if all children have alighted from the vehicle. Installed on the side of the window in the rear row on the driver's side, the alarm prevents children from being left unattended in the vehicle.



Safety Bell

If the safety bell is pressed inside the vehicle while the ignition is turned OFF, the warning light blinks and the door lock is inactivated, and a message saying 'Help. There is a child in the vehicle' is sent to someone outside the vehicle. This feature is inactivated when the ignition is turned ON.

STARIA Kinder



Seat Belt Height Adjuster(11-Seater)

The height adjuster allows the height of the seat belt to be adjusted to fit the child's body.

※ When children are on board, seat belts must be adjusted and fastened to fit each individual passenger's body. For infants and toddlers, an appropriate child safety seat must be used at all times.



Seat Belt Fastening and Seating Confirmation System(15-seater)

This feature prevents injuries arising from not wearing or incorrectly fastening the seat belt and those caused by sudden starts by checking if children have fastened their seat belts and are in their seats.

- 1) Display inactivated: The display is inactivated when nobody is seated, and seat belts are not fastened
- 2) Red indicator: Lights up when seat belts are not fastened
- 3) Green indicator: Lights up when seat belts are fastened(regardless of seating)

Integrated Controller

Enjoy enhanced convenience by easily adjusting warning lights and the "Vehicle Stopping" indicator.



Surround View Monitor(Optional)

A total of 4 cameras that provide a visual check of the front, left/right, and rear of the vehicle to enhance the driver's locational awareness, park safely, and drive along narrow lanes.

Operation Log

Helps enhance driving safety by recording and monitoring vehicle status and vehicle operation data such as sudden acceleration and braking.

STARIA Ambulance

The STARIA Ambulance is an emergency vehicle equipped with various advanced medical equipment to respond to emergency situations when transferring patients.



STARIA Hybrid Ambulance 6-seater

STARIA Ambulance



(L) : Main Stretcher (Link Type)

(R) : Main Stretcher(Exclusive, Main Stretcher Base Included)

Main Stretcher (Link Type)
One emergency person can transport and load a patient.



Emergency Vehicle Light Controller & Amplifier
The LED emergency lighting ensures excellent visibility and durability, and it comes with an integrated amplifier for easier control.

Oxygen Tank Cylinder
The oxygen tank essential for emergency rescue operations comes as a basic feature along with enough room for additional tanks if needed.
※ The cylinder comes without content.



Stretched Seat & Storage Compartment
The stretched seat is installed to transport an additional patient if necessary. The patient compartment also has enough room to store medical equipment.

Medical Equipment Compartment
A wall-mounted storage compartment provides storage of various medical equipment and items.



Rail Lighting & Ventilator (Ambulance)
The rail lighting provides clear visibility of patient's wounds and injuries, while the ventilator with adjustable fan speed offers comfort for patients.

Emergency Medical Personnel Seat
The 3-point safety belt ensures the safety of emergency medical personnel on board.

STARIA Ambulance



220V Inverter (Optional)

The 220V inverter allows the use of 220V medical devices onboard.

Respiratory Equipment & Aspirator (Optional)

Respiratory equipment and an aspirator are installed to supply oxygen for emergency patients.



Trauma Treatment/Intravenous Set (Optional)

The built-in intravenous set allows prompt care on emergency trauma patients.



Auxiliary Battery & Storage Compartment (Optional)

An auxiliary battery is installed in the auxiliary battery storage compartment to supply stable power when using electrical equipment.



Video Recorder (Optional)

This device records video of the vicinity of the vehicle (dashcam).

STARIA Special Ambulance

This STARIA Special Ambulance equipped with highly advanced equipment aids rescue operations as well as emergency medical services.



STARIA Special Ambulance 6-seater

STARIA Special Ambulance



STARIA Hybrid Special Ambulance 6-seater

STARIA Special Ambulance



Main Stretcher (Exclusive, Scoop Stretcher Storage Included)

The stretcher prevents swaying when transporting patients and folding of legs when unloading. It also comes with a scoop for easier handling.

Respiratory Equipment (Fixed) & Aspirator (Fixed)

Respiratory equipment and an aspirator are installed to supply oxygen for emergency patients.

Emergency Medical Personnel Seat (Folding)

The 3-point safety belt ensures the safety of emergency medical personnel on board.

Blood-pressure Monitor (Fixed)

Check the patient's condition thoroughly through accurate blood pressure measurement.

Patient Compartment Controller & Intercom

The installed controller controls the lighting and medical equipment in the patient compartment, while the intercom allows communication with the driver.

Video Recorder (Optional)

This device records video of the vicinity of the vehicle (dashcam).

STARIA Special Ambulance



Search Light & Remote Control (Optional)

Lights the area around the vehicle in all directions during night operations.



Rear Electronic Display (Optional)

Displays yield messages and provides emergency operation information.

STARIA Wheelchair Lift

This is a vehicle designed exclusively for the people with disabilities offering convenience to wheelchair occupants when entering the vehicle.



STARIA Wheelchair Lift 7-seater

STARIA Wheelchair Lift



Powered lift for passengers on wheelchairs

The powered lift allows easy access to the vehicle.

Wheelchair Lift Platform

The grid flooring prevents wheelchairs from slipping when entering and exiting the vehicle. And safety plates are added at the front and rear of the platform.

Wheelchair Front and Rear Securement

Wheelchair safety hooks mounted on all corners of the interior floor of the vehicle safely secure the wheelchair when boarding.

Rear Wheelchair Safety Hook

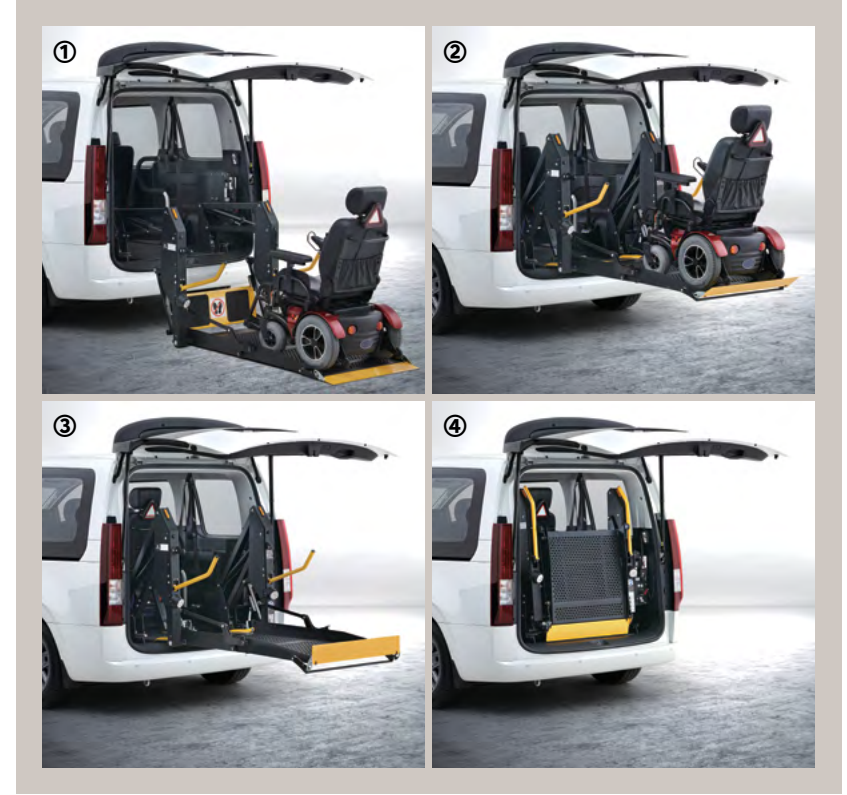
The rear wheelchair safety hooks can be detached to secure passage for the wheelchair occupant.

Tailgate Step Lighting

The tailgate boarding section is illuminated, making it convenient and safe at night or in dark places.

Wired Remote Control

The remote control allows easy and simple control of the lift.



Instructions

1. Turn on the power to the wheelchair lift, lower the lift all the way down until the platform lies flat on the ground, and load the wheelchair with the occupant.
2. Operate the controller, and the lift platform will level and rise.
3. When the lift platform rises and is level with the interior floor of the vehicle, move the wheelchair occupant into the vehicle and fasten the wheelchair safety hooks and belts.
4. Return the wheelchair lift platform to its original position and turn off the power.

STARIA Wheelchair Lift



Powered Swivel Seat (Optional)

The swivel seat is controlled electrically by a wired remote control allowing the passengers with mobility disabilities easier access to the vehicle.



Powered Seat (Swiveling)



Powered Seat (Forward and Backward)



Powered Seat (Up and Down)

Convenience

Advanced convenience features that go beyond conventional constraints offer a superior driving experience.



10.25-inch Navigation System(BlueLink and Phone Projections)

Enjoy a comfortable driving experience with the wide-screen high-resolution navigation system.



Built-in Cams

A video recording device with high-resolution cameras mounted front and back allows for easier recording through various modes including all-time, parking, time lapse and event modes.



In-car Payment

Register your credit card with the In-car Payment app to use at affiliated stores and other businesses without the need for your actual credit card. With a simple tap on the navigation display, you're able to pay for fuel, parking and more.



Car to Home

Remotely control your IoT-enabled home electronics through the navigation system or via voice commands from inside your vehicle.



Full Auto Air Conditioner

The fully automatic air conditioner maintains an optimal interior climate by monitoring and displaying the level of air quality inside while also purifying the air.

* The After-Blow system is available only on diesel2.2(Excluding 6-speed manual transmission) and hybrid models.

Performance

Our first crosswind stabilization control system provides stable driving performance with active control technology.

Diesel VGT 2.2

177 Max. Power PS/3,800rpm **44.0** Max. Torque kgf-m/1,500~2,500rpm

11.8 Combined Fuel Economy ※ STARIA Tourer km/ℓ(6-speed manual transmission, 11-seater, 2WD, 17-inch Tires, without Built-in Cam)

SmartStream LPG 3.5

240 Max. Power PS/6,000rpm **32.0** Max. Torque kgf-m/4,500rpm

6.7 Combined Fuel Economy ※ STARIA Tourer km/ℓ(8-speed Automatic transmission, 11-seater, 2WD, 18-inch Tires, Built-in Cam)

Smartstream Gasoline 1.6 Turbo Hybrid

245 Max. System Power (gasoline engine : 180PS, electric motor : 54kW)

37.4 Max. System Torque (gasoline engine : 27.0kgf-m, electric motor : 304Nm)

13.0 Combined Fuel Economy (based on 9-seater/18-inch tires, without built-in cam)



Crosswind stabilization control system

The crosswind stabilization control system actively controls lane departures caused by strong crosswinds to maintain existing driving direction and ensure driving stability.



HTRAC

Multi-link Rear Suspension

(Rigid axle suspension and leaf springs for STARIA Cargo)

Hybrid

STARIA Hybrid secures convenient and comfortable driving experience even for longer trips with its e-Motion Drive system, great fuel efficiency, and quietness.



e-Motion Drive (e-Comfort Drive + e-Dynamic Drive)

A hybrid-exclusive system that uses a variety of technologies, including electric motors, to deliver a superior ride and improved handling.

• e-Comfort Drive

e-Ride Gen1

Experience enhanced comfort and stability every time the vehicle encounters a speed bump with motors that counteract the vehicle's sway.

• e-Dynamic Drive

e-Handling

Controlling drive torque to maintain optimal tire traction during turns improves maneuverability and helps ensure a more stable driving experience.

e-EHA

Controls the motor to maximize grip during emergency steering, reducing vehicle skidding and improving frontal collision avoidance.

Traffic-Focused Control

By leveraging GPS navigation road data (on highways), unnecessary engine starts during stop-and-go situations in congested areas are minimized to enhance the ride experience.

Hybrid-exclusive Features

A variety of dedicated features, including driving and fuel economy information, energy flow charts, ECO driving, and more, make driving fun and smart.

Safety

The advanced safety features of STARIA Lounge safeguard everyone on board.



Safe Exit Assist

Keeps all doors closed when an approaching vehicle is detected from the rear or sides after the vehicle has stopped and alerts the driver when one or more of the vehicle's doors begin to open.



Driver's Knee Airbag

STARIA Lounge safely protects its passengers from collisions in any direction with the 7-airbag system, including a driver's knee airbag.



3-point Seat Belts and Headrests for all passengers

STARIA Lounge offers 3-point seat belts and headrests for all passengers for a safer and more comfortable driving experience.



Advanced Rear Passenger Alert(Radar-based)

Sensors detect and alert the driver if passengers are present in the rear seats to prevent accidents.

Hyundai SmartSense

Your mobility is safer with Hyundai SmartSense.



Forward Collision-Avoidance Assist

Alerts the driver of the potential for a forward collision when vehicles in front suddenly slow down or stop, if there are pedestrians or cyclists in front of the vehicle, or if there are vehicles approaching from the other side when turning left at a junction. The system also activates the brakes in the event of an impending collision.



Rear Collision-Avoidance Assist

Alerts the driver of the potential for a collision from the rear when the turn signal indicator is switched on for lane changes.

Intelligent Speed Limit Assist

The front view camera recognizes speed limit signs and processes the information, alerts the driver, and assists the driver in staying within the speed limit.

※ Since the advanced driver assistance system (ADAS) is a function that assists the driver's operation, always drive with caution. ※ The function may not operate smoothly or properly depending on the surrounding environment and driving conditions. In addition, the function may operate with restrictions depending on the regulation related to the certification of the advanced driver assistance system. For details, refer to the owner's manual. ※ The above specifications are applied differently depending on the trim, powertrain, and specifications directly selected by the vehicle purchaser in consideration of price and preference.



Driver Attention Warning

Monitors and displays the driver's attention level, issuing warning messages on the cluster display and sounding an alarm if the driver's level of alertness drops to "inattentive".

Navigation-Based Smart Cruise Control

Ensures safe driving once it is switched on, by automatically adjusting vehicle speed on highways based on navigation data. The smart cruise control reduces vehicle speed automatically within safe driving zones and curved sections of the road.



Highway Driving Assist

Helps maintain a safe distance on the highway from the vehicle in front, steering the vehicle so it remains centered within its lane at a speed preset by the driver.



Surround View Monitor

Displays the vehicle's surroundings for safer parking.

Rear Cross-Traffic Collision Prevention Assist

Monitors areas to the left and right when the vehicle is in reverse and alerts the driver of any approaching traffic on either side. The brakes activate, if necessary, to avoid an impending collision.



※ Since the advanced driver assistance system (ADAS) is a function that assists the driver's operation, always drive with caution. ※ The function may not operate smoothly or properly depending on the surrounding environment and driving conditions. In addition, the function may operate with restrictions depending on the regulation related to the certification of the advanced driver assistance system. For details, refer to the owner's manual. ※ The above specifications are applied differently depending on the trim, powertrain, and specifications directly selected by the vehicle purchaser in consideration of price and preference.

Tourer



215/65 R18 Tiers &
17-inch Steel Wheels



215/65 R18 Tiers &
17-inch Alloy Wheels



235/55 R18 Tiers &
18-inch Alloy Wheels



STARIA Tourer 9-seater Modern Full Option(Abyss Black Pearl)

※ For 11-seater vehicles, LED positioning lights in the front center of the vehicle are not available due to Lamp Installation Standards prescribed by Motor Vehicle Safety Standards.



Headlights (MFR type)
LED Headlights (MFR type)



Driver Side Safety Power Window
Parking Distance Warning (Forward)



Ventilated Front Seats
Heated Front Seats



60/40 Split Folding 2nd Row Seats
USB Chargers (all rows)



※ Features and specifications may vary by trim model and may include options. Please refer to the monthly price table for more detailed features specific to each model.

Cargo



215/65 R18 Tiers &
17-inch Steel Wheels



215/65 R18 Tiers &
17-inch Alloy Wheels



STARIA Cargo 5-seater Modern Full Option(Ecotronic Gray Pearl)



Heated Steering Wheel
Ignition Switch and Smart Key System

4.2-inch Color LCD Cluster(digital)
10.25-inch Navigation System

Electronic Parking Brake
Full Auto Air Conditioner

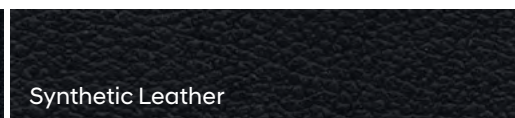
Roof Tray
Hi-pass

※ Features and specifications may vary by trim model and may include options. Please refer to the monthly price table for more detailed features specific to each model.

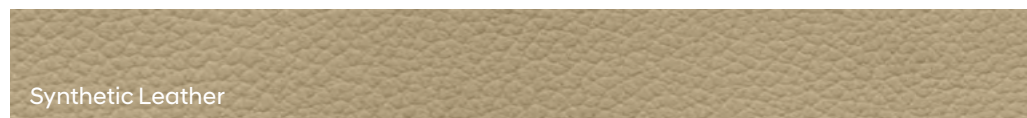
Colors

Interior colors

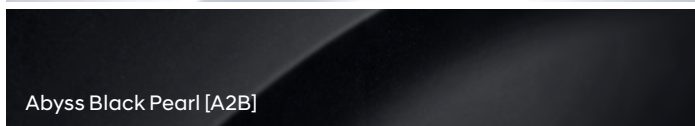
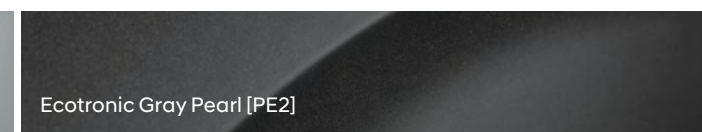
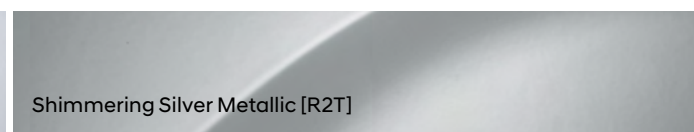
Black Monotone



Beige



Exterior colors



※ Ecotronic Gray Pearl [PE2] will be available from the second quarter of 2025.

H Genuine Accessories

H Genuine Accessories offer a wide range of convenience and leisure products to meet the needs and lifestyles of drivers.

New Vehicle Option Products



Trailer Package
(Tow Hitch + LED Tailgate Lamps)

Luggage Partition Table
(Shelf Mode/Partition Mode)

Sliding Cargo Bed
(3-seater / 5-seater)

Multi-hanger
Vehicle Protection Film

Aftermarket-only Products



Child Headrests
Light Chair

* The tow hitch in the trailer package has a maximum towing weight of 1,500 kg (with inertia brake) and a vertical load of 100 kg with European 13PIN (ISO11446).

* The multi-hanger comes with only the brackets mounted and the hanger placed inside the vehicle.

* In addition to shelf and partition modes, the Luggage Partition Table can be removed and used as an outdoor table.

* The sliding cargo bed has a maximum payload of 300 kilograms.

* The sliding cargo bed is fitted in both the 3-seater and 5-seater cargo models with uniform dimensions (1,380 x 1,541 mm). The 3-seater variant additionally offers extra space in the rear seating area.

* The Vehicle Protection Film is applied only to certain parts of the vehicle: front bumper, rear side bumpers, rear upper bumper, door steps, sideview mirrors, door cuffs, and the gas filler.

* H Genuine Accessories vary by the available trims for new vehicle options. Please refer to the current month's price list for more details.

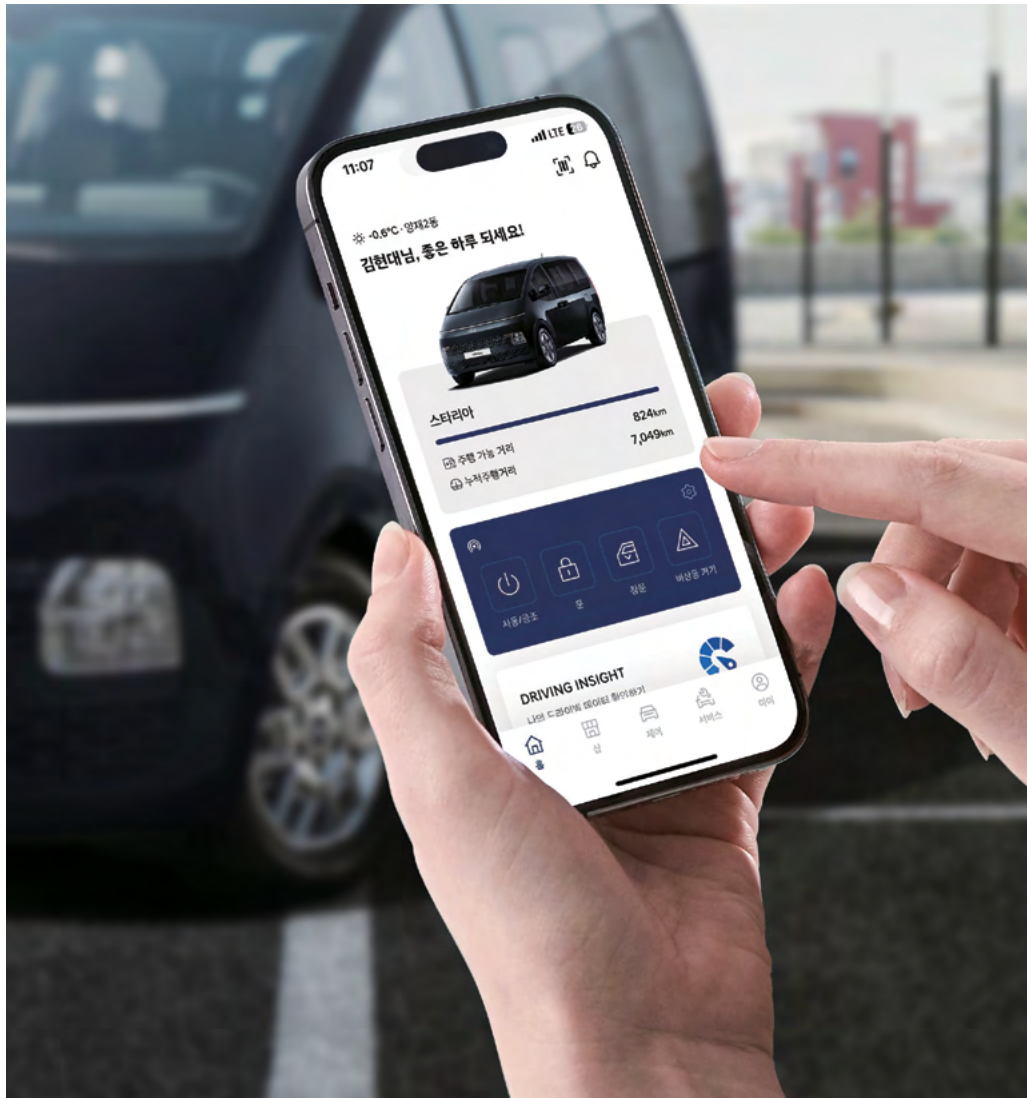
* Aftermarket-only products can be purchased at Hyundai Shop's (Shop.Hyundai.com) Hyundai Brand Pavilion.

myHyundai

Enhanced to provide a connected mobility experience, meet the official Hyundai app, myHyundai.



Download the myhyundai app



Home



- Owned vehicle information
- Driving insights
- Navigation
- Owner's manual

My



- Wallet
- In-Car Payment
- My Car Report
- Car Logbook

Shop



- Hyundai Shop
- Hyundai Brand
- Bluelink Store
- Purchase of the Month Benefits

Services



- Maintenance service appointment
- Roadside assistance
- Driver service
- Car wash

Control



Remote control

- Ignition/climate control, doors and windows control
- Hazard lights control
- Vehicle status notification
- Vehicle inspection notification

Build-in Cam

- Videos of the vehicle's surroundings
- Videos of parked events
- Download videos

Digital Key

- Doors and ignition control
- Hazard lights and panic alarm control
- Share Digital Key accounts

* Services are available only for customers who have purchased a vehicle and subscribed to BlueLink membership.

* Free of charge for 5 years for customers who have subscribed to BlueLink membership for the first time with an additional 5-year Light Service (SOS Emergency Assistance, Airbag Deployment Alert, Monthly Vehicle Health Report, Traffic Information, etc.).

* Remote Start and Climate Control are not available on manual transmission models.

* Some services may be restricted depending on the means of service delivery, such as mobile apps or devices.

Unit : mm, Wheel tread is based on 235/55 R18 tires. * Excluding the Staria Tourer, the overall height is 2,000mm for the Cargo, 2,120mm for the Kinder, 2,120mm for the Ambulance, and 1,990mm for the Wheelchair Lift.

Dimensions



Type	Diesel VGT 2.2	Smartstream LPG 3.5	SmartStream Gasoline 1.6 Turbo Hybrid		Model Name	Displacement (cc)	Curb weight (kg)	Tire (inches)	Transmission	Grade	CO ₂ Emissions (g/km)	Fuel economy (km/ℓ)			
												Combined	City	Highway	
Overall length (mm)	5,255	←	←	9-seater STARIA Tourer	2.2 Diesel 2WD / 2.2 Diesel 2WD(Built-in Cam)	2,199	2,240	17	8-speed Automatic	4	171 / 175	11.3 / 11.0	10.3 / 10.1	12.9 / 12.5	
Overall width (mm)	1,995	←	←		2.2 Diesel AWD / 2.2 Diesel AWD(Built-in Cam)	2,199	2,320	17	8-speed Automatic	4	189	10.3	9.2	12.0	
					2.2 Diesel 2WD / 2.2 Diesel 2WD(Built-in Cam)	2,199	2,250	18	8-speed Automatic	4	175	11.0	10.1	12.5	
Overall height (mm)	Tourer : 1,990 Cargo : 2,000	Tourer : 1,990 Cargo : 2,000 Kinder : 2,120	←		2.2 Diesel AWD / 2.2 Diesel AWD(Built-in Cam)	2,199	2,330	18	8-speed Automatic	4	189	10.3	9.2	12.0	
					LPG 3.5 2WD / LPG 3.5 2WD(Built-in Cam)	3,470	2,190	17	8-speed Automatic	5	197 / 199	6.7	6.0 / 5.9	8.0 / 7.9	
					LPG 3.5 2WD / LPG 3.5 2WD(Built-in Cam)	3,470	2,200	18	8-speed Automatic	5	199 / 202	6.7 / 6.6	6.0 / 5.9	7.7	
Wheelbase (mm)	3,275	←	←		Gasoline 1.6 Turbo Hybrid(Built-in Cam)	1,598	2,220	17	6-speed Automatic	3	132	12.4	13.1	11.6	
					Gasoline 1.6 Turbo Hybrid	1,598	2,220	17	6-speed Automatic	3	129	12.6	13.5	11.6	
					Gasoline 1.6 Turbo Hybrid(Built-in Cam)	1,598	2,225	18	6-speed Automatic	3	132	12.4	13.1	11.6	
Tread (front) (mm)	Tourer : 1,732(17-inch) / 1,721(18-inch) Cargo : 1,732(17-inch)	←	←		Gasoline 1.6 Turbo Hybrid	1,598	2,225	18	6-speed Automatic	3	129	12.6	13.5	11.6	
				2.2 Diesel 2WD	2,199	2,280	17	6-speed Automatic	3	163	11.8	11.0	13.0		
Tread (rear) (mm)	Tourer : 1,743(17-inch) / 1,732(18-inch) Cargo : 1,716(17-inch)	←	←	11-seater STARIA Tourer	2.2 Diesel 2WD	2,199	2,310	17	8-speed Automatic	4	179	10.8	9.8	12.5	
					2.2 Diesel AWD / 2.2 Diesel AWD(Built-in Cam)	2,199	2,380	17	8-speed Automatic	4	190	10.3	9.4	11.6	
					2.2 Diesel 2WD / 2.2 Diesel 2WD(Built-in Cam)	2,199	2,320	18	8-speed Automatic	4	180	10.8	9.7	12.4	
Engine type	Diesel VGT 2.2	Smartstream LPG 3.5	Smartstream G1.6T Hybrid		2.2 Diesel AWD / 2.2 Diesel AWD(Built-in Cam)	2,199	2,390	18	8-speed Automatic	4	190	10.3	9.4	11.6	
					LPG 3.5 2WD / LPG 3.5 2WD(Built-in Cam)	3,470	2,270	17	8-speed Automatic	5	199	6.7	6.0	7.8	
					LPG 3.5 2WD / LPG 3.5 2WD(Built-in Cam)	3,470	2,280	18	8-speed Automatic	5	199	6.7	6.0	7.8	
Displacement (cc)	2,199	3,470	1,598		3-seater STARIA Cargo	Gasoline 1.6 Turbo Hybrid(Built-in Cam)	1,598	2,305	17	6-speed Automatic	3	130	12.6	13.1	12.0
						Gasoline 1.6 Turbo Hybrid(Built-in Cam)	1,598	2,315	18	6-speed Automatic	3	130	12.6	13.1	12.0
Maximum power (PS/rpm)	177 / 3,800	240 / 6,000	180/5,500	2.2 Diesel 2WD		2,199	2,005	17	6-speed Automatic	3	156	12.3	11.6	13.2	
				2.2 Diesel 2WD / 2.2 Diesel 2WD(Built-in Cam)		2,199	2,020	17	8-speed Automatic	3 / 4	166 / 168	11.6 / 11.5	10.6 / 10.5	13.1 / 13.0	
Maximum torque (kgf·m/rpm)	44.0 / 1,500–2,500	32.0 / 4,500	27.0/1,500–4,500	LPG 3.5 2WD / LPG 3.5 2WD(Built-in Cam)		3,470	1,990	17	8-speed Automatic	5	189 / 191	7.0 / 6.9	6.2 / 6.1	8.2	
				Gasoline 1.6 Turbo Hybrid(Built-in Cam)	1,598	1,985	17	6-speed Automatic	3	125	13.0	13.9	12.0		
Fuel tank capacity (ℓ)	75	85	65	5-seater STARIA Cargo	2.2 Diesel 2WD	2,199	2,080	17	6-speed Automatic	3	161	11.9	11.2	13.0	
Motor maximum power (kW)	-	-	54		2.2 Diesel 2WD / 2.2 Diesel 2WD(Built-in Cam)	2,199	2,085	17	8-speed Automatic	4	172 / 174	11.3 / 11.1	10.3 / 10.1	12.7	
					LPG 3.5 2WD / LPG 3.5 2WD(Built-in Cam)	3,470	2,055	17	8-speed Automatic	5	189 / 191	7.0 / 6.9	6.2 / 6.1	8.2	
Motor maximum torque (Nm)	-	-	304		Gasoline 1.6 Turbo Hybrid(Built-in Cam)	1,598	2,050	17	6-speed Automatic	3	125	13.0	13.9	12.0	
System maximum power (PS/rpm)	-	-	245/5,500	11-seater STARIA Kinder	LPG 3.5 2WD	3,470	2,330	17 / 18	8-speed Automatic	5	210	6.3	5.7	7.2	
				15-seater STARIA Kinder	LPG 3.5 2WD	3,470	2,370	17 / 18	8-speed Automatic	5	210	6.3	5.7	7.2	

Maintain a constant speed to drive more efficiently.

-The above fuel economy was calculated based on standard driving conditions. Actual fuel efficiency may vary depending on road conditions, driving styles, cargo weight, maintenance conditions, and outside temperatures. -Some of the photographed vehicles in this brochure depict optional features for illustrative purposes and may differ from the actual vehicles. -The features, colors, and specifications stated in this brochure are subject to change based on improvements in the vehicle's exterior or performance. -The above engine performance data is based on the net value, which is a legal requirement applied by the Ministry of Land, Infrastructure and Transport from 1997 onwards. To produce the data, an advanced measurement method that takes into account the resistance of vehicle emissions was used. This method may generate results slightly lower than those generated by existing methods based on the gross value. -The vehicle colors printed in this brochure may differ from the actual colors. -All of the measurements in this brochure apply to the diesel-powered models. Therefore, the specifications and the features of the LPG-powered models might differ. -Hyundai Motor vehicles are sold at prices uniformly applied for the same products everywhere across the country to promote fair business practices. -Use of engine oil or fuel that is of low quality may result in damage to the vehicle. -Please refer to the owner's manual for details about new technologies and features stated in this brochure.

※ Trims not indicated as having a built-in cam installed would have the same fuel efficiency even if a built-in cam were installed.

The images presented here are intended to inform customers and display the best models and options. The specifications described above vary by option, package, powertrain, and exterior color. For specification details by model, please refer to the monthly price table.



STARIA
Digital Catalogue
(PC/Tablet)



STARIA
Digital Catalogue
(Mobile)



STARIA
Homepage



STARIA
Hybrid Homepage



Hyundai Certified
Secondhand Vehicle
Information on
purchasing
secondhand vehicles



Hyundai Motor Company ranked first in the 2025 National Customer Satisfaction Index (NCSI) across all segments (compact sedans, mid-size, semi-full-size, full-size, compact RVs, large RVs, and EVs).



Hyundai Motor Company ranked first in the 2024 Korean Customer Satisfaction Index (KCSI) across all survey categories (passenger vehicle, RV, compact car, EV).



2024 KS-QEI (Korea Standard-Quality Excellence Index) Ranked 1st in 12 surveyed sectors (passenger vehicle-semi-midsized/midsized/full-size, SUV-compact/semi-midsized/full-size; EV, AS, D/E/F-segment luxury sedan, full-size luxury SUV)



Ranked first place in the automobile warranty service category of the 2024 Korean Standard-Service Quality Index (KS-SQI) for 10 consecutive years

The images used in this brochure are intended to enhance customers' understanding and are focused on high-end models and optional features. The features introduced in this brochure may vary from model to model. Please refer to the monthly price table for more detailed features of each model.