

Elantra

LEBANON'S BEST
6-YEAR WARRANTY
120,000km





CONFIDENTLY REFINED

From its voluminous grille to its wide, assured stance, the Elantra has urban confidence and refinement written into every line. The eye-catching looks confirm its unmistakable presence.







FUNCTIONALLY INTUITIVE

This is a driver's car. Ergonomic and intuitive, the center fascia is tilted 6.9° towards the driver for optimum control, while switches are grouped according to their function.







GOING PLACES

Hyundai Motor has created a car for the future. One that delivers on the looks but underpinned with practicality and an effortless ability that fits in to your life.



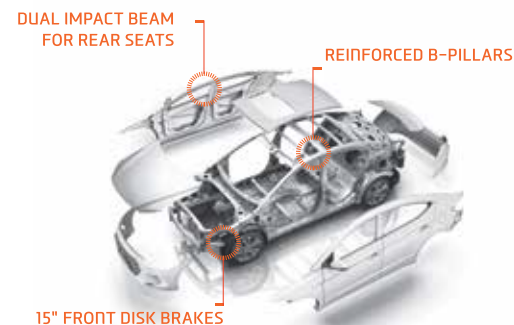


BRING ON THE SENSATIONS

Well-balanced, stable handling is delivered through motor-driven power steering, optimized suspension and enhanced acceleration response.

DETAILS, OPTIONS, CHOICES

It's great to have choices. It means you tailor things to your own personal preferences. The Elantra offers a wide range of optional features for both the exterior and interior. Outside mirror repeaters for a touch of class, a heated steering wheel for extra comfort on winter mornings - whatever you choose, the end result is your car, your way.



HID HEADLAMPS

HID (High Intensity Discharge) headlamps light up the road with a more intense light than conventional headlamps.

FOG LAMPS

Neatly recessed and mounted low on the already imposing front end, fog lamps provide better visibility in poor weather conditions.

LED OUTSIDE MIRROR REPEATERS

Aerodynamically-shaped outside mirrors feature integrated LED side repeaters for refined looks and enhanced visibility when turning.

AERO BLADE WIPERS

With a lower profile than conventional wiper blades, aero blade wipers provide better aerodynamics and less noise at high speeds.

WELCOME LIGHT DOOR HANDLES

The outside door handles are available in chrome with pocket lights further emphasizing the car's sporty refinement.

SAFETY WINDOWS

If a window senses an obstruction - such as a child's hand - it automatically lowers to prevent fingers from getting stuck.

HIGH-MOUNTED STOP LAMP (HMSL)

A high-mounted stop lamp provides extra visibility to drivers behind and adds to the Elantra's striking looks.

ENGINE START/STOP BUTTON

With the Smart key in your pocket, handbag or briefcase, all it takes to start the engine is a press of the engine start/stop button.

BODY STRUCTURE

BUILT STRONGER

ENHANCED CHASSIS RIGIDITY AND STRENGTH

More than 53% of the Elantra's sub-frame is comprised of Advanced high strength steel (AHSS). It means enhanced chassis rigidity as well as improved handling, durability and performance.



15" alloy wheels

17" alloy wheels

16" alloy wheels

15" steel wheels



AUDIO REMOTE CONTROL

Controls for the audio system are mounted on the steering wheel and buttons for making hands-free phone calls.

REAR VIEW CAMERA

The rear view camera is displayed on the color TFT LCD, helping you to position the car straightly.

POWER WINDOW CONTROLS

The controls for the power windows are positioned on the driver-side door for optimum ergonomics and ease of operation.

REAR AIR VENTILATION SYSTEM

This allows back seat passengers to easily control the amount of air flow.

AUTO DEFOGGING SYSTEM

When condensation forms on the windscreen, sensors automatically activate the blowers to clear the glass and ensure optimum visibility.

FLOOR CONSOLE

The top of the center console slides back and forth to ensure that the driver enjoys the optimal position.

USB CHARGER

An onboard USB charger is the height of convenience. Simply plug in your mobile device using the handily-located socket.

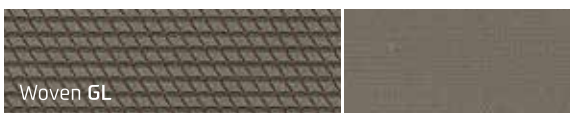
CUP HOLDERS

Twin cup holders let you enjoy a coffee or other favorite drink on the go, with no risk of spillage.

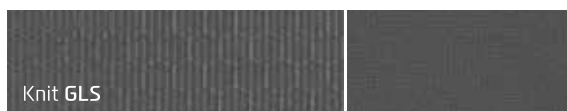
INTERIOR TRIMS



Beige two-tone



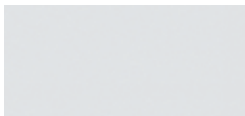
Gray two-tone



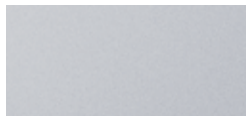
Black one-tone



EXTERIOR COLORS



Polar white **WAW**



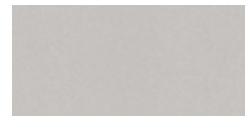
Platinum silver **T8S**



Sparkling metal **UYS**



Iron gray **YT3**



Ice wine **RW5**



Blazing yellow **WY7**



Phoenix orange **RY9**



Fiery red **PR2**



Intense copper **PF8**



Demitasse brown **RB4**



Marina blue **P4B**



Stargazing blue **SG5**



Phantom black **PKA**

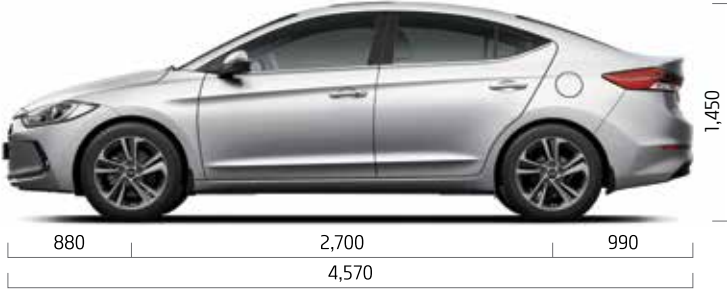
SPECIFICATIONS

Type			1.6 MPI gasoline engine	2.0 MPI gasoline engine
Dimensions (mm)	Exterior	Overall length (mm)		4,570
		Overall width (mm)		1,800
		Overall height (mm)		1,450
		Wheel base (mm)		2,700
		Wheel tread (mm)	Front	15" : 1,563 / 16" : 1,555 / 17" : 1,549
			Rear	15" : 1,572 / 16" : 1,564 / 17" : 1,558
	Interior	Leg room (mm)	Front	1,073
			Rear	906
		Head room (mm)	Front	985
			Rear	947
		Shoulder room (mm)	Front	1,427
			Rear	1,405
Engine	Engine type		DOHC	
	Displacement (cc)		1,591	1,999
	Max. Power (ps / rpm)		127.5 / 6,300	156 / 6,200 (Euro-2*), 152 / 6,200 (Euro-3,4,5*)
	Max. Torque (kg·m / rpm)		15.77 / 4,850	19.9 / 4,500 (Euro-2*), 19.6 / 4,000 (Euro-3,4,5*)
Brakes			Dual-diagonal, split-circuit, power-assisted braking system with pressure proportioning valve In case of ABS/ESC : Electronic brake force distribution(EBD)	
Suspension		Front / Rear	McPherson strut type / Coupled torsion beam axle	
Tire			195 / 65 R15, 205 / 55 R16, 225 / 45 R17	
Fuel tank (liter)			50	

- The above values are results from internal testing and are subjected to change after validation.
 - Some of the equipment illustrated or described in this catalog may not be supplied as standard equipment and may be available at extra cost.
 - Hyundai Motor Company reserves the right to change specifications and equipment without prior notice.
 - The color plates shown may vary slightly from the actual colors due to the limitations of the printing process.
 - Please consult your dealer for full information and availability on colors and trims.
- *European emission standard.

DIMENSIONS

Unit : mm



* Wheel tread •15" alloy wheels (Front/rear) : 1,563/1,572 •16" alloy wheels (Front/rear) : 1,555/1,564 •17" alloy wheels (Front/rear) : 1,549/1,558

LEBANON'S BEST
6-YEAR WARRANTY
120,000km

Aley 05-558 034/5 | Bakaata 05-502 888 | Ballouneh 09-237 294/5 | Chiyah 01-546 354
Halba 06-694 111 | Hasbaya 07-845 170 | Jbeil 09-796 954 | Jounieh 09-639 669
Kalamoun 06-400 114 | Kfarsaroun 06-955 551 | Khaldeh 05-813 149
Qornet Chehwan 04-930 411/2 | Saida 07-727 510 | Tabarja 09-850 800 | Tripoli 06-411 171
Tyre 07-351 313 | Verdun 01-808 500 | Zahle 08-815 500 | Zalka 01-886 222