

# TUCSON





# Step in, Stand out.

The all-new TUCSON signals the start of a new day, and a new way of driving. Rejecting the ordinary, the all-new TUCSON pushes the boundaries of the segment to reinvent just about everything. Outside, TUCSON is designed to impress while inside, you'll discover a level of roominess, comfort and versatility that exceeds all expectations.









# Design that's thrilling and timeless.

With its 3D parametric-style grille and jewel-like surfaces, TUCSON is for trendsetters with a taste for futuristic design. Adopting a daring new design language we call Sensuous Sportiness and created with cutting-edge digital design tools, TUCSON stands out with its concealed daytime running lights, angulated wheel arches, and contrast side cladding.













# Experience that open feeling.

A feeling of openness welcomes you the moment you step into TUCSON's cabin. The open-type cluster is a major innovation in design that establishes a premium, high-tech atmosphere that makes you feel safe, relaxed, and confident.

Full-touch center fascia (Personalized profiles)



10.25" open cluster



Multi air vent





# Live for the moment.

Whether it's a solo adventure or a long weekend excursion with the entire family, TUCSON offers you exceptional versatility like the rear seat folding feature that provides 1,903 litres of flat storage space. The passenger space is equally accommodating with abundant amounts of room to keep everyone seated comfortably.





# Your digital journey starts here.

Whatever the journey, time seems to fly by when you have a reliable travel companion along for the ride like TUCSON's 8-in infotainment system. The touchscreen is easy to operate and synchs effortlessly with your smartphone to provide you some entertainment and information you need while on the road. And with Cruise Control, highway driving is a lot more convenient.

8" LCD touchscreen



Cruise Control



# Hyundai SmartSense



**Forward/Reverse Parking Distance Warning (PDW)**  
If your car is too close with obstacle, PDW warns you by using ultrasonic sensors in the front and rear bumpers. So you can avoid scratches and park safely.





# You set the tempo.

Press the accelerator pedal and your pulse rate quickens as TUCSON responds with a surge of smooth, quiet power made possible by Smartstream, Hyundai's latest engine technology. You have a choice of two types of engines and for a nice high tech touch, push button gear selection is now available on the top variant.

## Smartstream engines

### Gasoline 2.0

156 Maximum Power  
ps/6,200 rpm

192 Maximum Torque  
N-m/4,500 rpm

### Diesel 2.0

186 Maximum Power  
ps/4,000 rpm

416 Maximum Torque  
N-m/2,000-2,750 rpm







# Drive the game-changer.

Whatever the challenge each new day brings, you will be ready to face them confidently when you're driving a game-changer like the all-new TUCSON. You get solid engineering, an iconic style and high-technology features that are highly engaging and that make your day a whole lot easier.



# Features



MFR LED headlamps



Dark black chrome radiator grille



Outside mirror LED repeaters)



LED rear combination lamps



Chrome-coated DLO



Drive mode



Mood lamp



Power tailgate system



Shift-by-wire automatic transmission



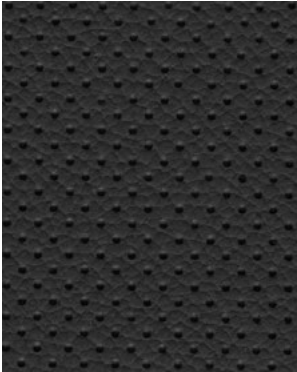
Full auto air conditioning system



Interior colours



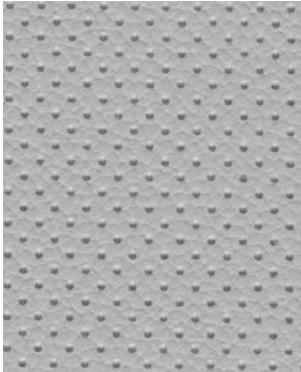
Black interior



Leather

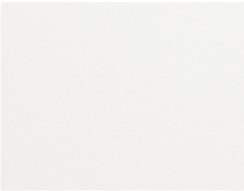


Gray interior

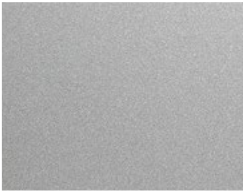


Leather

Exterior colours



White Cream



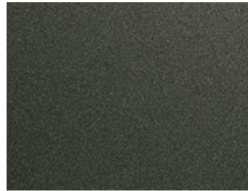
Shimmering Silver



Crimson Red



Deep Sea



Amazon Gray



Phantom Black

Specifications

MODEL		TUCSON	
VARIANT		2.0 CRDi GLS+ 8A/T	2.0 GLS 6A/T
Seating Capacity		5	
ENGINE			
General	Type	Smartstream D2.0	Smartstream G2.0
	Displacement   cc	1,998	1,999
	Max Power    ps/rpm	186 @ 4000	156ps/6,200rpm
	Max Torque   Nm/rpm	416 @ 2000-2750	192 Nm/4500rpm
STEERING			
Type		Electric Power Steering	
Steering Wheel Adjustment		Manual Tilt and Telescopic	
Steering Wheel Material		Leather	
Steering Wheel Remote		With	
Cruise Control		With	
Drive Mode Select		With	
Paddle Shifters		With	-
TRANSMISSION			
Type		8 AT (Shift-by-wire)	6 AT
CHASIS			
Suspension	Front / Rear	McPherson Strut/Multi-Link	
Brake Type	Front / Rear	16"Disc/16"Disc	
EPB (Electric Parking Brake) w/ Auto Hold		With	
Wheel & Tire		19" Alloy Wheel	18"Alloy Wheel
Hood Insulator		With	
DIMENSION			
Overall (LxWxH)	mm	4630 x 1,865 x 1,665	
Wheelbase	mm	2,755	
Ground Clearance	mm	181	
Curb Weight	kg	1,610 - 1,739	1,457 - 1,571
Gross Vehicle Weight	kg	2,200	2,050
EXTERIOR FEATURES			
Headlamps		LED + Static Bending Light	
Autolight Control		With	
DRL		Dedicated LED	
Position Lamp		LED	
Wiper Blade		Aero	



MODEL		TUCSON	
VARIANT		2.0 CRDi GLS+ 8A/T	2.0 GLS 6A/T
Seating Capacity		5	
Outside Rear View Mirror	Colour	Body Colour	
	Repeaters	With	
	Mirror Adjustment	Electric (Heated)	
	Function	Power Folding	
Rear Foglamp		With	
Roof Rail		With	
Rear Combination Lamp		LED	
Rear Spoiler with High Mount Stop Lamp (HMSL)		With	
INTERIOR/CONVENIENCE FEATURES			
Overhead Console		w/ Lamp	
Room Lamp		With	
Mood Lamp		With	
Sunvisor		Driver & Passenger with mirror and illumination	
Center Console		with Cup holder	
Power Features	Power Windows	Driver: Auto Up/Down and Safety	
		Passenger Fr+Rr : Auto up/Down & Safety	
INTERIOR/CONVENIENCE FEATURES			
	Power Door Locks	With	
	Power Tailgate	With	-
	Power Side Mirrors	With	
Instrument Cluster		Supervision w/ 10.25" TFT LCD Info Display	
Seats	Covering	Leather	
	Power	Driver (w/ Power Lumbar support)	-
	Rear Seat	6:4 Split Back Folding w/ Remote Folding	
	Seatback Pocket	Driver & Passenger	
Wireless Charger		With	
Charging Ports		1 USB (Front Tray), 1 USB (Console)	
Luggage Lamp		With	
Luggage Net and Screen		With	
Audio System		8" Touchscreen Display with Apple Carplay and Android Auto	
Speakers		6 (Doors:4; Tweeters:2)	
Bluetooth		With Customizable Voice Recognition	
Air Conditioning		Auto Temp. Control	



**5 Years Vehicle Warranty**  
Vehicle warranty 5 years / 200,000km,  
whichever comes first

MODEL		TUCSON	
VARIANT		2.0 CRDi GLS+ 8A/T	2.0 GLS 6A/T
Seating Capacity		5	
SAFETY & SECURITY			
Airbags	Front	Dual	
	Side & Curtain	With	
	Front Thorax & Curtain	With	
ABS (Anti-Lock Braking System)		With	
ESC (Electronic Stability Control)		With	
DBC (Downhill Brake Control)		With	
HAC (Hill-start Assist Control)		With	
TSA (Trailer Stability Assist)		With	
TPMS		With	
PDW (Parking Distance Warning)		With	
Rear View Monitor		With	
MSLA (Manual Speed Limit)		With	
Inside Rear View Mirror		Electro Chromic	
Key System		Smart Key & Button Start	
Immobilizer		With	
Rear View Monitor w/ Parking Guidance Dynamic		With	
Child Safety Rear Door Locking		With	
Child Anchor		Upper and Lower	

- The above values are results from internal testing and are subject to change after validation.
- Some of the equipment illustrated or described in this catalog may not be supplied as standard equipment and may be available at extra cost.
- Hyundai Motor Company reserves the right to change specifications and equipment without prior notice.
- The colour plates shown may vary slightly from the actual colours due to the limitations of the printing process.
- Please consult your dealer for full information and availability on colours and trims.



Overall Width  
Wheel Tread

1,865  
1,615



Overall Length  
Wheel Base

4,630  
2,755

Overall Height  
(Including roof rack)

1,665



Wheel Tread\*  
1,622



Dealer stamp

**Hyundai Motor Philippines, Inc.**

[www.hyundai.com/ph](http://www.hyundai.com/ph)

Copyright © 2022 Hyundai Motor Company. All Rights Reserved.



[HyundaiMotorPhilippines](https://www.facebook.com/HyundaiMotorPhilippines)



[hyundaimotorphilippines](https://www.instagram.com/hyundaimotorphilippines)



[Hyundai Motor Philippines](https://www.youtube.com/HyundaiMotorPhilippines)



[hyundai-motors-philippines](https://www.linkedin.com/company/hyundai-motors-philippines)

**Hyundai Motor Philippines, Inc. Customer Care Hotline:**

Mobile Phone: 0977-8409191 Landline Phone: (02) 531-HEART or (02) 531-43278