



People's expectation toward individual mobility requires more than just a convenient means of transportation. The old understanding of cars has become outdated. A car represents individuals' lifestyles, and it became an integral part of their lives. At the same time, the automobile industry has experienced seismic change. Hyundai Motor Company has grown rapidly to become one of the largest automakers, backed by world class production capability and superior quality. We have now reached a point where we need a qualitative approach to bring bigger ideas and relevant solutions to our customers. This is an opportunity to move forward and we have developed a new brand slogan that encapsulates our willingness to take a big leap. Led by our new slogan and the new thinking underlying it, we will become a company that keeps challenging itself to unlock new possibilities for people and the planet.

**Hyundai Motor Company**  
<http://worldwide.hyundai.com>  
GEN. LHD GLS 1609 ENG. WD  
Copyright © 2016 Hyundai Motor Company. All Rights Reserved.





I see  
a changing world.

**Moving in a new direction**

When I look at my IONIQ electric, I see the future of mobility and the chance to make a difference. IONIQ electric is my choice because it's all-electric and has zero emissions. So, I am helping create a cleaner, better world. What's more, driving IONIQ is pure fun. And it looks amazing!







# Plug into the future of driving.

Zero emissions is the Everest of clean mobility and the IONIQ electric has reached the summit. I love it's pure simplicity: an 88kW electric motor connected to a 28kWh lithium-ion polymer battery giving me up to 280km of driving on a single charge. That's freedom and that's what driving IONIQ is all about.

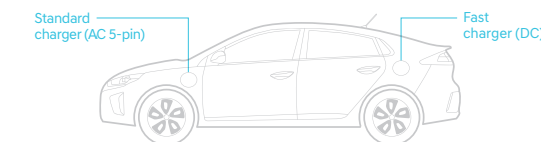
## LED headlamps

Stylish headlamps feature LED technology to deliver maximum illumination while drawing a minimal amount of electricity.



## Grille

IONIQ's distinctive front grille achieves a perfect balance of elegant design and outstanding aerodynamic properties.



## Dual charging ports

For maximum flexibility and convenience, IONIQ comes equipped with both quick and standard charging ports. Either way, connecting the cable is designed to be safe, secure and simple.

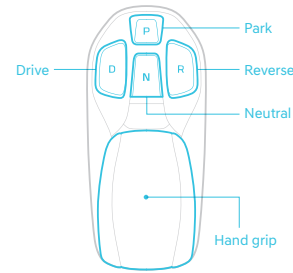


The GLS model with optional equipment is shown here.



# When function connects with emotion.

Running my fingers over IONIQ's control console, every touch point radiates emotional engineering. There's a soothing and satisfying feeling to everything I touch and look at. The skilled craftsmanship and selection of premium materials reveal exquisite care and integrity that strengthen my trust and confidence in the IONIQ brand.



## Supervision cluster with 7" color TFT LCD

The impressive digital gauge cluster features a high resolution LCD that provides continuous updates on energy flow, battery state of charge and more.



## Wireless charging

New induction technology lets me recharge my smartphone without connecting cables (compatible models only). And an alert is triggered should I ever leave my phone behind.



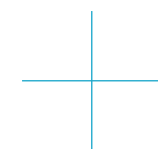
## Electronic gear shift button

Gear shift controls are where I naturally expect them to be, right on the center console. With just one easy click, I'm in Drive / Park / Reverse. Includes a safety interlocking system, of course.



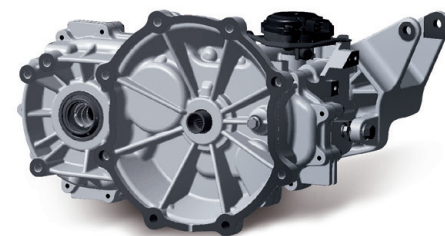
The GLS model with optional equipment is shown here.





## Reduction gear box

This single-speed gear box reduces the high speed rotation of the electric motor and transfers the energy to the front drive wheels. It's simple, lightweight and almost silent. But it's also a very big part of the IONIQ fun factor: Maximum torque is available at any speed. The throttle response is instantaneous and never fails to put a smile on my face.



### Paddle shifter (Regenerative braking control)

These paddle shifters give me four levels of control over regenerative braking. One click on the right paddle and I can prioritize recharging and economy or, if I'm in the mood, I just click the left paddle to minimize regenerative braking



## Aluminum hood and liftgate

In order to attain the best possible fuel efficiency, IONIQ was put on a diet: IONIQ's hood and liftgate are fabricated from weight-saving aluminum instead of traditional steel. Hot stamping, high-tech adhesives and other innovative manufacturing methods were adopted to reinforce safety critical structures.



### 7-airbag system

My passengers & I enjoy complete protection thanks to 7-airbags: a pair of front airbags for my front passenger & I plus an airbag for my knees. A pair of side airbags (front only) and full-length curtain airbags defend against side collisions.

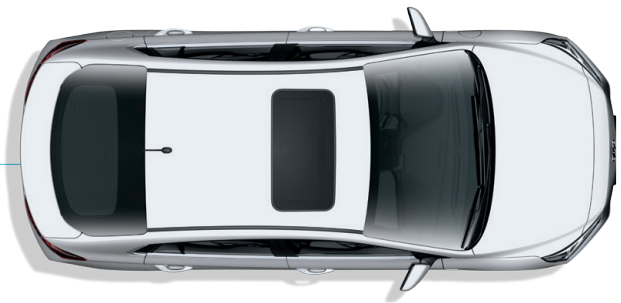




# Clean and simple.

One of the most striking things about my IONIQ is how quiet and smooth it is to drive. That's because the technologies behind IONIQ are perfectly simple: an 88kW electric motor coupled to a 28kWh battery, all governed by an EPCU. All-electric mobility means a steep reduction in the number of moving parts which produce mechanical noise and vibration. So IONIQ is whisper quiet and best of all, it generates absolutely zero emissions.

Up to 280km



## Driving pleasure at its most efficient

Like most drivers, I average between 30 and 60km per day in a mix of highway commuting and city driving. I can count on my IONIQ to get me to my destination and back home again with lots of energy to spare.



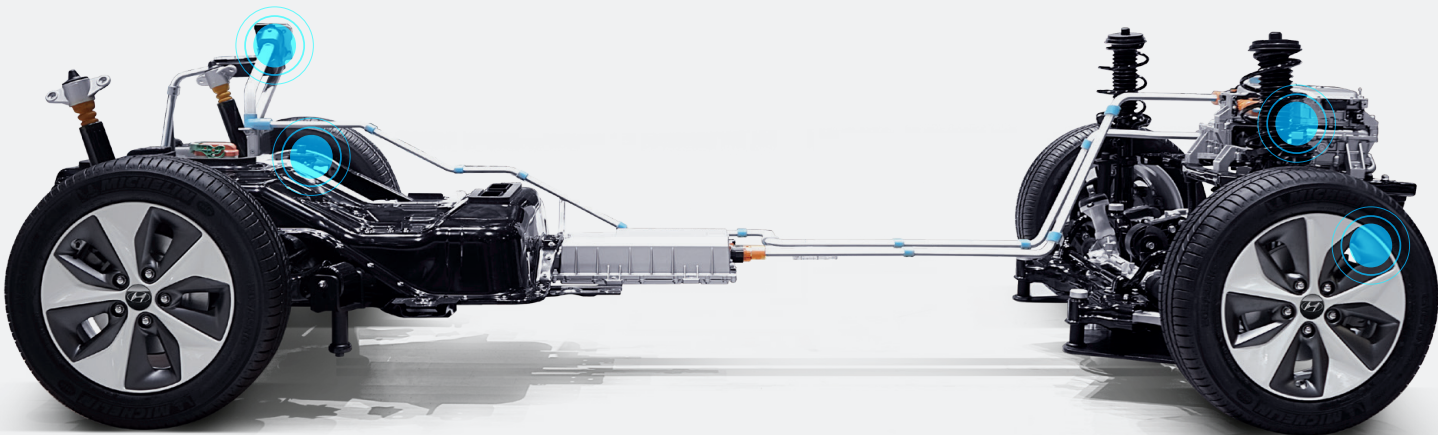
## 28kWh lithium-ion polymer battery

Featuring multi-stage high-voltage safety systems, the battery's lithium-ion polymer chemistry delivers high energy density for improved driving range. The layout and packaging give IONIQ a low center of gravity that promotes agile handling and a comfortable ride.

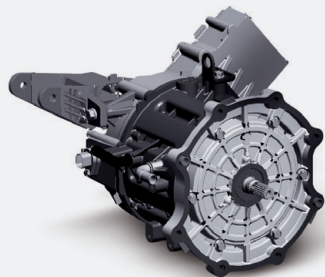


## Electric Power Control Unit

EPCU, the brain behind IONIQ, is programmed to perform highly complex tasks regulating the various electrical and electronic systems and sub-systems such as the AC/DC Inverter, Low Voltage DC-DC Converter and Vehicle Control Unit.



## Permanent-magnet synchronous motor



Serving up 88kW (120PS) of pure fun, this motor achieves a perfect balance of high efficiency and high power. It has a maximum torque rating of 30.1 kgfm (295 Nm).



## In-Cable Control Box (ICCB) charging cable



This cable lets me recharge my IONIQ practically anywhere. It's designed to connect to a standard wall socket and will recharge IONIQ using household AC current.





# Packages



Beltline molding



Puddle lamps  
Chrome door scuffs



Safety window controls



Power sunroof  
Chrome-coated door handles



Heated steering wheel



5.0" LCD audio system (CDP/MP3/Radio)  
Front ventilated seats



Seat folding system (6:4 type)



Rear air ventilation  
Integrated memory seat (IMS)

The GLS model with optional equipment is shown here.



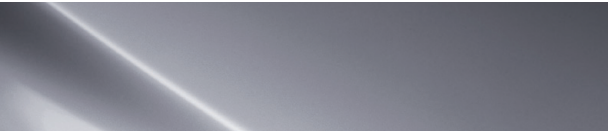
## Exterior colors



Polar white (WAW)



Platinum silver (T8S)



Aurora silver (TS7)



Phantom black (NKA)



Blazing yellow (WY7)

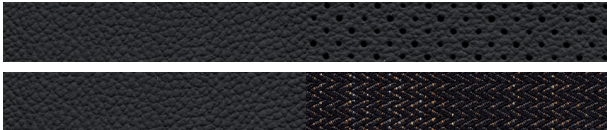


Marina blue (N4B)

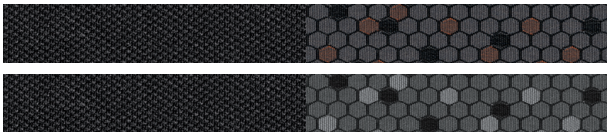


Phoenix orange (RY9)

## Interior colors



Leather/Leather + Woven



Woven



## Wheels



16" alloy wheels

## Specifications

### ELECTRIC MOTOR

Type	Permanent-magnet synchronous motor (PMSM)
Max. power (kW)	88
Max. torque (Nm)	295
Battery capacity (kWh)	28

### DIMENSIONS

Head room (mm)	Front / rear (w/o sunroof)	994 / 950
Leg room (mm)	Front / rear	1,073 / 906
Shoulder room (mm)	Front / rear	1,425 / 1,396
Luggage capacity (ℓ)	Up to roof	455
	Rear seats down, up to roof	1,410

- The above values are results from internal testing and are subject to change after validation.
- Some of the equipment illustrated or described in this catalog may not be supplied as standard equipment and may be available at extra cost.
- Hyundai Motor Company reserves the right to change specifications and equipment without prior notice.
- The color plates shown may vary slightly from the actual colors due to the limitations of the printing process.
- Please consult your dealer for full information and availability on colors and trims.



Overall width 1,820  
Wheel tread 1,555



Overall length 4,470  
Wheel base 2,700

Overall height 1,460



Wheel tread 1,564

Unit : mm