



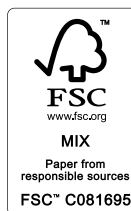
## NEW THINKING. NEW POSSIBILITIES.

People's expectation toward individual mobility requires more than just a convenient means of transportation. The old understanding of cars has become outdated. A car represents individuals' lifestyles, and it became an integral part of their lives. At the same time, the automobile industry has experienced seismic change. Hyundai Motor Company has grown rapidly to become one of the largest automakers, backed by world class production capability and superior quality. We have now reached a point where we need a qualitative approach to bring bigger ideas and relevant solutions to our customers. This is an opportunity to move forward and we have developed a new brand slogan that encapsulates our willingness to take a big leap. Led by our new slogan and the new thinking underlying it, we will become a company that keeps challenging itself to unlock new possibilities for people and the planet.

**Hyundai Motor Company**  
www.hyundai.com

GEN. LHD 1410 ENG. ID-KM

Copyright © 2014 Hyundai Motor Company. All Rights Reserved.  
www.facebook.com/hyundaiworldwide  
www.youtube.com/hyundaiworldwide  
plus.google.com/+hyundai



HYUNDAI | NEW THINKING.  
NEW POSSIBILITIES.

# ACCENT







# REMARKABLE

WELCOME TO THE ACCENT + A compact car means you have to compromise, right? Wrong. With the Hyundai Accent, you'll wonder how a car of its size can pack so much into the specification.





## SMALL IN SIZE, BIG IN STATURE

Here is proof that you don't have to give up style, performance and refinement just because you've made the decision to drive a compact car. Incorporating features found in higher class cars, the Accent gives you sleek and good looks, advanced technology and groundbreaking safety attributes, and tops it all off with a robust, sporting character all of its own.



## GET THE LOOK AND YOU ATTRACT THE LOOKS

It's a fast-moving world, so it's important to catch people's eye. The Accent does just that, with a profile that's modern, athletic and futuristic. Up front, a smartly-designed radiator grille announces the car's personality head-on.







## SLEEK, DYNAMIC DESIGN IN EVERY DIMENSION

With a long low cabin space, wide wheelbase and short front overhang, the Accent's proportions tell you all you need to know about its sporty nature. And leave you in no doubt that this is one stylish vehicle.



## A CAR THAT GOES A LITTLE FURTHER

With its distinctive outline, the Accent has real presence on the road. Take it into the city - the place where trends are set - and you'll find yourself setting a trend of your own. One where comfort meets functionality, where street toughness is built in, and where enjoyment is never far behind.







# CONNECTED

INSIDE, YOU'RE IN TOUCH + Hyundai believes that the interior of a car is no place to be without technology. In the Accent, the latest technological devices keep you connected to the modern world.



MP3  
HANDS  
FREE

**Bluetooth hands free system**  
Staying in touch means being able to talk to friends and colleagues whenever you want. With Bluetooth functionality, you can make and receive phone calls hands-free through the car's audio system, keeping things both safe and convenient.









**Multimedia for the way you live**

Interconnectivity in the Accent means an audio platform that lets you plug in a full range of portable devices. It means memorising your playlists so that you can call up your favourite tunes instantly. And it means a clear, readable LCD that provides you with all the information you need, at a glance.

**MODERN AND ARCHITECTURAL  
THE BLUEPRINT FOR THE CABIN LAYOUT**

**From here to your destination, you're in control**

The Accent's driver space has been designed around the driver. It sounds obvious, but it's something that's often overlooked. The seat position provides you with a commanding view of the road ahead. Controls are logically positioned, while dials and instrumentation are placed in a natural, uninterrupted eye-line. The balanced proportions of the symmetric, Y-shaped center fascia panel carry through to the doors with their sporty grip handles. The steering wheel is a three-spoke design that fits comfortably in the hands, while trim details are in stylish semi-glossy black, or white pearl high-glossy for unique visual impact.



**Audio system  
(Radio/CD/MP3/USB/AUX)**

The 6-speakers integrated audio system is designed for your listening pleasure. MY MUSIC functionality lets you transfer music files from your portable device and store them in the system's memory.



**Connectivity (USB/AUX)**

A USB port on the front console lets you connect an iPod\*/ iPhone\* or other portable device and play your music through the car's audio system. Plug and play, on the move.

**Supervision cluster**

The supervision cluster, with its circular rev counter and speedometer, is illuminated with white and blue backlighting for optimum clarity and readability. Providing vehicle information through both sight and sound, no-nonsense functionality combines with sporting elegance.

**Steering wheel remote control**

From the driver seat of the Accent you can operate a Bluetooth-enabled mobile phone without having to take your hands off the steering wheel. The steering wheel remote control also lets you control the audio system and adjust the volume of phone calls.

\* iPod and iPhone are trademark of Apple inc.





#### Room for you, room for storage

Spacious is not a word that normally applies to compact cars, but the Accent once again upsets the rule book. A large interior space means there's plenty of leg and head room for both driver and passengers, while there are a number of handy storage spaces for small items.

## COMFORT AND CONVENIENCE MAKE YOURSELF AT HOME

### However far you're going, you're taken care of

The Accent's seats offer good firm support to make even the longest journeys comfortable.

And because wind noise can affect your enjoyment when driving at a constant speed, sound proofing has been optimized throughout the vehicle, with noise intake prevention structures around the door handles, engine air intakes built to emit less noise, and anti-noise connectors in the outside mirrors.

There are elegant interior trims to choose from, while rear door cup holders let your passengers keep their drinks secure.



#### Luggage space

Luggage-carrying capacity is an impressive 389 liters (SAE). Enough to hold four golf bags and three small bags with ease.



#### Seat folding system

The rear seat backs fold down in a 6:4 ratio, enlarging the already roomy cargo space and allowing you to easily carry a variety of gear.



#### Full auto air conditioning system

With full auto air conditioning system, the driver can select one climate level setting and the front passenger another. Automatically adjusting to maintain the desired level, it's ideal for long journeys with friends and family, as it ensures a comfortable environment for everyone on board.









A dynamic advertisement for a red car. The car is shown from a low angle, driving through water, creating a large splash. The background features a city skyline with a prominent skyscraper and a body of water under a blue sky with clouds. The word "EXCEPTIONAL" is written in large, white, sans-serif capital letters on the left side of the image.

# EXCEPTIONAL

**PERFORMANCE WITH SAFETY +** The sheer driveability of the Accent becomes apparent as soon as you take the wheel. With the body shape cutting the air, the car blends the inspirational with the practical, and supplies power and torque to complement the robust good looks. All backed up, of course, by a range of outstanding safety features for maximum reassurance.





## HUNGRY FOR THE KILOMETRES, LEAN ON THE REFUELLING STOPS

Out on the road, you're immediately struck by the Accent's quiet ride, generous interior space and abundance of up-to-the-minute technology. You'll notice something else too: the fuel gauge hardly drops. That's because Hyundai engineers have devised one of the most fuel efficient engines there is, one that takes only 5.7 liters of fuel to run 100 km\*.

5.7 L/100km

Fuel economy is the defining goal of any vehicle that aspires to combine affordability with performance.

100 ps

With maximum power delivery of 100 ps at 6,000 rpm\*, the Accent is both efficient and quick off the mark.

136 g/km  
CO<sub>2</sub>

As you'd expect, the Accent's emission figures are also compact. As little as 136 CO<sub>2</sub> g/km\*. A car for tomorrow, today.

\* 1.4 manual transmission (EURO-3).





#### 7-speed DCT automatic transmission

A 7-speed DCT automatic transmission\* features two clutches operating independently, ensuring uninterrupted power flow from the engine, plus maximum acceleration and efficiency.

\* The application time of the applicable spec may vary depending on the region.



## EXCEPTIONAL DRIVING COMES FROM EXCEPTIOANL ENGINEERING

The Accent is as appealing under the hood as it is above. Chief among the attractions is Blue Pack, a fuel efficiency package that delivers more ECO-efficient driving. An alternator management system (AMS) controls the power supply to the battery, putting less strain on the engine. Maximizing energy regeneration when decelerating and idling, the benefits come to the fore in start/stop urban traffic, since both fuel consumption and emissions are minimized. Not only that, but acceleration performance is also enhanced, through reduced power delivery to the alternator when picking up speed.

#### Continuously variable transmission (CVT)

An automatic transmission\* combining excellent acceleration performance and fuel consumption, Continuously variable transmission (CVT) also provides silky smooth gearshifts.

\* Automatic transmission may differ depending on engine. For more information, please visit the website.

#### 6-speed manual transmission

A 6-speed manual gearbox provides smooth, noiseless gearshifts.



**blue**

#### 1.4 MPI gasoline engine

Lightweight to enhance fuel economy, a 1.4 MPI gasoline engine produces a maximum 100 ps at 6,000 rpm.

#### 1.6 MPI gasoline engine

A 1.6 MPI gasoline engine features enhanced injection pressure and combustion optimization and produces a maximum 124 ps at 6,300 rpm.

#### 1.6 VGT diesel engine

Generating a maximum 136 ps at 4,000 rpm, the 1.6 VGT diesel engine is quiet, clean and responsive. Using the common rail system, it delivers optimum fuel efficiency and minimized emissions.







#### Anti-lock brake system (ABS)

When braking on wet and slippery roads, any deviation in direction is detected by the ABS sensors. The individual anti-lock brake system then activates to keep your wheels from locking up, prevent skidding and maintain directional control.

## PEACE OF MIND IS ALL PART OF THE DRIVE

The most important part of the driving equation is you. That's why the Accent, like every Hyundai vehicle, incorporates the very latest active and passive safety features. From an advanced airbag system to the use of high-tensile-strength steel plates in the chassis, and from an Anti-lock Brake System (ABS) to seatbelt pretensioners, both hazardous and routine driving situations have been taken into account.



#### 6-airbags system

6-airbags provide all-round protection. One for the driver, one for the front-seat passenger, two curtain airbags running the length of the cabin, plus two side airbags.

#### Rear parking assist system (RPAS)

Sensors in the rear bumper detect objects you can't see when reversing, and sound a warning if you get too close.

#### Rear camera display system

A camera at the rear relays images to a screen on the Electro-Chromic rear-view Mirror (ECM). When parking, guide lines on the screen show you where you are in relation to other vehicles and the curb, to guide you into position.





## WONDER NO MORE

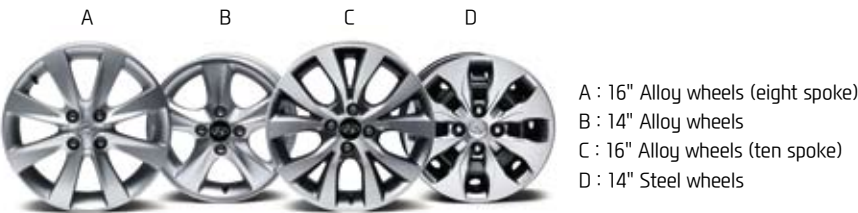
You can ask yourself how it manages to include everything you need.  
You can ask yourself how it blends style and economy so effortlessly.  
But really, there's no need to question. Just take a seat and enjoy.



# THE MANY FACETS OF A GREAT CAR

## Outside and in, features that never go unnoticed

From stylish exterior to high-tech interior, it's the details of the Accent that draw the attention. There are nine beautiful paint finishes to choose from, five wheel designs in both alloy and steel, plus all the convenience and pleasure of the latest technological devices on the inside. You'll welcome the opportunity to make the Accent uniquely yours.



### Radiator grille

Distinctive and sporty, the radiator grille enhances the exterior with its flowing lines and black and chrome detailing.

### Projection headlamps with LED positioning lamps

Providing optimum brightness at night, a 2-piece bezel design adds a touch of luxury during the daytime.

### Fog lamps

As well as giving you extra visibility in foggy weather, fog lamps are all part of the stylish, continuously-designed body shell.

### Outside mirror repeaters

Providing a stylish, modern touch, outside mirror repeaters offer extra visibility and safety when turning.

### Headlamps

The headlamps, with their bulb array and black bezel design, add to the modernity and dynamism at the front of the car.

### Micro-type antenna

A high-tech radio antenna combines perfectly with car's racy body shape, but doesn't get in the way in the car wash.

### Rear combination lamps

LED rear combination lamps provide a distinctive lighting pattern, as well as being energy efficient and durable.

### High-mounted stop lamp

A high-mounted stop lamp, located in the eye line of drivers traveling behind, alerts them when you brake and helps ensure they keep their distance.

### Audio system (Radio/MP3/USB/AUX)

The audio system, with radio, MP3, USB and AUX, features 4 speakers and 2 tweeters, for high-quality sound reproduction on the move.

### Cooling glove box

Working in conjunction with the air conditioning, a cooling glove box keeps your drinks and snacks fresh.

### Manual air conditioning system

With 4-speed blower control, manual air conditioning lets you set the interior air temperature by hand.

### Power window controls

Ergonomically positioned, the power window control switches are metal coated for a better grip.

### Sliding armrest

The center console armrest cover moves about 60 mm forward to enhance your comfort.

### Engine start/stop button

A feature inherited from high-end cars with a sporting prowess, the engine start/stop button requires just a simple push to fire the engine.

### Rear door bottle holders

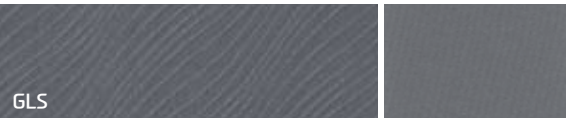
Conveniently positioned rear door bottle holders let rear seat passengers place their drinks where they won't spill.

### Smart key

With a pleasing organic shape, the smart key locks and unlocks the car with just a press of a button.



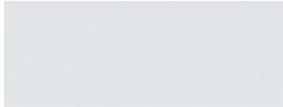
INTERIOR TRIMS



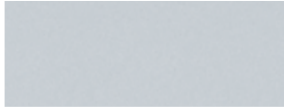
EXTERIOR COLORS



Phantom black MZH



White crystal PGU



Sleek silver RHM



Sonic silver P9S



Veloster red P9R



Vitamin C R9A



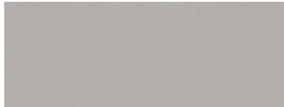
Sunflower SY Y



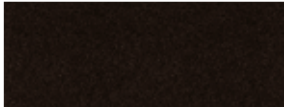
Ice SU2



Dazzling blue ZD6



Misty beige M2B



Coffee bean VC5

SPECIFICATIONS

Dimensions				
Leg room (mm)	Front / Rear	1,062 / 846		
Head room (mm)	Front / Rear	1,014 / 946		
Shoulder room (mm)	Front / Rear	1,364 / 1,356		
Hip room (mm)	Front / Rear	1,304 / 1,198		
Minimum ground clearance (mm)		147		
Engine		1.4 MPi	1.6 MPi	1.6 VGT
Engine type		Gasoline		Diesel
Displacement (cc)		1,368	1,591	1,582
Max. Power (ps / rpm)		100 / 6,000	124 / 6,300	136 / 4,000
Max. Torque (kg-m / rpm)		13.6 / 3,500	15.9 / 4,200	30.6 / 1,750~2,500 (DCT), 26.5 / 1,500~3,500 (M/T)
Bore x Stroke (mm)		72 x 84	77 x 85.44	77.2 x 84.5
Electrical system	Alternator	13.5-Volt 90 A		12-Volt 120 A
	Starter	12-Volt 0.9 kW		12-Volt 1.7 kW
Suspension				
Front		McPherson strut type with coil spring		
Rear		CTBA (Coupled torsion beam axle)		

- The above values are results from internal testing and are subjected to change after validation.
- Some of the equipment illustrated or described in this catalog may not be supplied as standard equipment and may be available at an extra cost.
- Hyundai Motor Co. reserves the right to change specifications and equipment without prior notice.
- The color plates shown may vary slightly from the actual colors due to the limitations of the printing process.
- Please consult your local dealer for full information and availability on colors and trims.

DIMENSIONS

unit : mm



1,488\*



820

2,570

980

1,457

4,370



1,493\*

1,700

\* Wheel tread   •14" (Front / rear): 1,506 / 1,511   •16" (Front / rear): 1,488 / 1,493



██████████ ██████████ ██████████ ██████████ ██████████ ██████████

██████████ ██████████ ██████████ ██████████ ██████████