

TUCSON





Inspiration (Amazon Gray)



STAY.

In an era defined by new lifestyles,
we change the SUV's paradigm.

The TUCSON has evolved into something
that is far more than merely a mode of transportation.
It's part of your daily routine.

We have made the TUCSON a special place for motorists,
and its qualities becomes increasingly clear as you
spend more time in it.



Inspiration (White Cream)

An even wider cabin meets an innovative design and cutting edge technologies to make your daily routine feel special.



Inspiration (Amazon Gray)

Design

The TUCSON, which stands out in any location, is the first SUV that has achieved the “Sensuous Sportiness” style with perfection.



Inspiration (Amazon Gray)

The highly stylized grille, which looks like a jewel depending on the viewing angle and the light reflection, embodies the TUCSON's identity. The front-end neatly flows into a clear, bold character line present on both sides.



The daytime running lights seamlessly integrated into the grille, the completely new rear lights, and the muscular looking wheel arches are guaranteed to make a lasting impression.



Front design / MFR LED headlights (includes hidden daytime running lights)

Inspiration (Crimson Red)



Chrome DLO molding
19-inch alloy wheel



Rear design



Space

Futuristic and elegant, the dashboard wraps around the passengers.

The new TUCSON is even more spacious than before thanks to its revolutionary design.
It provides the driver and the passengers the space required for an active lifestyle.



Second row fold-and-dive
The second row seats offer a fold and dive function with a generous operating angle, meaning the cabin can be configured for maximum luggage space, or as a private space that can be used in a number of different ways.

* Not available on the Hybrid.



Inspiration (Gray)

Convenience

The full-touch center fascia and freestanding instrument cluster are as easy to operate as a smartphone. The air conditioning system keeps the cabin fresh at all times. It will make you want to stay in the TUCSON for as long as possible.



Full-touch center fascia
Capacitive buttons give the center stack a more streamlined design. Gently touching the interface is all it takes to execute a command; it's just like using a tablet. (Note: does not include the climate control interface)
* The screen layout/design of the infotainment system may change with the regular updates.



10.25-inch, full color freestanding instrument cluster
The freestanding, full color LCD instrument cluster increases the TUCSON's fun quotient. Its width reduces eye strain, and its graphics change depending on the driving mode selected.



Air cleaning mode (Displays level of fine particles in the cabin)
When the air conditioning is turned on, the touch screen displays the level of fine particles found in the cabin in real time. Pressing the air cleaning button displays the level of fine particles in the cabin using indicator colors. If the system detects the level is too high, the air cleaning mode is automatically activated to make the cabin fresh and pleasant as quickly as possible.



Multi Air Mode / After-Blow automatically dries the air conditioner
Touch the Multi Air Mode button ("Diffuser") to summon a subtle breeze that refreshes the air in the cabin. The After-Blow system activates a fan for a pre-determined period of time after the engine is turned off to dry any remaining condensation and reduce unpleasant odors.
* After-Blow can be activated via a menu in the infotainment system.
* After-Blow is not available on the Hybrid.

The wide range of infotainment functions adds a convenient touch to the driver’s daily routine.

The ignition can be turned on with a remote control, which is also capable of making simple payments.

Internet connected home devices can also be controlled from the comfort of your car.

Hyundai Digital key



Hyundai Digital key
Users can use a smartphone to open the door and turn on the ignition, even if they’re outside of the vehicle. These services are individualized if multiple drivers share the car.

* The Hyundai Digital Key NFC can only be used via smart phones programmed with this function. For compatible smart phone models, please refer to the Hyundai Motor website.

* The Apple iPhone blocks the service that enables the NFC function. Therefore, customers who have iPhones may not be able to use a smart phone-based digital key.



Wireless phone charger /Personalized profile
Tapping a smartphone equipped with a digital key against a wireless sensor hidden underneath the body loads a personalized profile which imports the settings and preferences already set by the driver.



Car to Home
Numerous internet connected devices (lights, plugs, air conditioning, circuit breakers, appliances, and so on) can be controlled with simple voice commands via the infotainment system.

* The voice recognition function and the Car to Home service can only be used after the driver signs up for a BlueLink membership.

Voice recognition vehicle control (Multi-function steering wheel)
The steering wheel mounted voice recognition button immediately provides the driver with important information, but it can also give data about the various vehicle functions (the air conditioning, the ventilated seats, and so on), and about various aspects of every day life.

Hyundai CarPay



Hyundai CarPay
The driver can use the navigation screen to make payments from inside the vehicle through a credit card pre-registered to a TUCSON-exclusive mobile app, without needing cash or a physical credit card, at Hyundai Motor partner stores. This function makes the driver’s daily routine significantly more convenient.

* The screen layout/design of the infotainment system may change with the regular updates.

The TUCSON's advanced technologies promise to make your driving experience even more enjoyable. The side-mounted cameras and the remote smart parking support function are invaluable assets to any driver.



Built-in cam (includes external battery)
The video-capture devices, which are embedded in the front and rear of the car and feature high-resolution cameras, are connected to the infotainment system, enabling the user to easily save and play high-resolution videos. Other functions include time-lapse recording and zoom.



Blind-spot View Monitor
When using the turn signal, the camera installed at the base of the exterior mirror displays videos of the left/right posterolateral views on the cluster screen.



Remote Smart Parking Support
This function allows the driver to park with ease after stepping out of the vehicle by simply using the smart key to control its forward and backward movements.



BOSE Premium sound
BOSE Premium Sound adjusts the sound based on the vehicle's speed to ensure a sharp, vivid sound experience even at freeway speeds.

Hyundai SmartSense

The TUCSON's cutting-edge driver-assistance systems prioritize the safety of the driver and the passengers under all circumstances, from the moment they step into the car to the moment they step out after parking. It's a state-of-the-art suite of technologies that makes daily life easier, and changes your lifestyle for the better.



Blind-spot Collision-avoidance Assist
The TUCSON emits an audible warning if it detects a collision with another vehicle (traveling either next to the SUV or behind it) is imminent after the driver engages the turn signal to change lanes. It automatically acts to prevent the collision if necessary.



Forward Collision-avoidance Assist
By analyzing data from the front-facing camera and the on-board radar, the TUCSON detects if a collision with an oncoming car, pedestrian, or cyclist is imminent while making a left turn at an intersection. It warns the driver if it senses danger, and it automatically applies the brakes if needed.

Safety Exit Assist
The TUCSON emits an audible warning if it detects a collision with another vehicle (traveling either next to the SUV or behind it) is imminent while it is parked and a passenger is opening one of the doors.



Lane Following Assist
The front-facing camera measures the dimensions of the TUCSON's lane, which allows the SUV to keep itself in the middle of its lane by automatically making steering inputs.



Highway Driving Assist
This function helps the driver maintain an appropriate distance with the car in front on a highway, or on any other type of vehicle-only road, and it lets users stay in the center of their lane, even on a winding road. It holds the speed set by the driver.

* When using the Highway Driving Assist function, the driver must keep his or her eyes forward and hands on the steering wheel for safety purposes.



Rear Cross-Traffic Collision-Avoidance Assist
The TUCSON emits an audible warning if it detects a collision with an approaching vehicle (coming from either direction) is imminent while backing up. It automatically applies the brakes if the driver does not react or in the event of increased likelihood of collision.

Rear Occupant Alert
After ascertaining whether there is a passenger in the rear seat of the vehicle, based on whether the rear door was opened and internal sensors, this system issues a warning message on the instrument cluster display and a warning sound after the driver has stopped the vehicle, turned off the ignition, and opened the driver's-side door, prompting the driver to check the passenger seat.



Inspiration (Amazon Gray)

Performance

Our third-generation platform and upgraded powertrains provide excellent ride quality and a driving experience that is both safe and dynamic.

Smartstream Diesel 2.0 engine				
186	Max. Power ps / 4,000rpm	42.5	Max. Torque kg-m / 2,000~2,750rpm	14.8 Gas mileage km / ℓ (8-speed A/T/2WD, Without built-in cam)

Smartstream Gasoline 1.6 Turbo engine				
180	Max. Power ps / 5,500rpm	27.0	Max. Torque kg-m / 1,500~4,500rpm	12.5 Gas mileage km / ℓ (7-DCT/2WD, Without built-in cam)

Smartstream Gasoline 1.6 Turbo Hybrid engine / Electric motor				
180	Max. Engine Power ps / 5,500rpm	44.2	Max. Motor Power kW	16.2 Gas mileage km / ℓ (6-speed A/T, Without built-in cam)
27.0	Max. Engine Torque kg-m / 1,500~4,500rpm	264	Max. Motor Torque Nm	



Multi Terrain Control
The driver can choose from diverse drive modes based on personal preferences or road conditions. The status of each drive mode can be verified via cluster or AVN.
* Applies only to Smartstream Diesel 2.0 engine.

HTRAC
Electronic All-Wheel Drive system (HTRAC)
Hyundai's available HTRAC technology makes the TUCSON an even better all-weather SUV. It makes driving enjoyable by distributing power as-needed, even if the driver is not consciously aware of it.
* Not available on the Hybrid.



Hybrid Inspiration (Shimmering Silver)

Hybrid

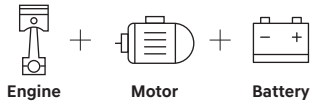
The TUCSON Hybrid is a next-generation SUV that blends dynamic driving performance with superior fuel efficiency.

Hybrid technology

The 10.25-inch touchscreen, which gains Hybrid-exclusive content, enhances driving pleasure.

E-Handling relies on an electric motor to improve handling while changing lanes.

It also makes the TUCSON more stable while turning.



1. Lithium polymer battery pack
Placed under the rear seats to maximize trunk space, this battery pack helps keep the Hybrid's weight in check while boosting fuel economy.

2. Permanent magnet electric motor
This motor supplements the engine's power while driving. It works with the automatic transmission to improve handling and fuel economy.

3. Regenerative braking system
This system converts the kinetic energy generated while decelerating into electricity that it channels to the battery pack. It's then used to power the electric motor, so it improves fuel economy.

4. Electric brake booster
This electric brake booster acts on the hydraulic system to ensure the brake pedal feels linear at all times, even if the regenerative braking system is slowing down the car.



Contents for Hybrid only
Numerous hybrid-specific displays (like real-time fuel economy, an energy flow chart, and so on) guarantee a smart and enjoyable driving experience.
* The screen layout/design of the infotainment system may change with the regular updates.

E-Handling
When turning, the drivetrain relies on the electric motor to improve handling and make the TUCSON more stable.



Hybrid Inspiration (Shimmering Silver)

Modern



17-inch alloy wheel
17-inch aerodynamic wheel
(Hybrid exclusive)



Modern (Phantom Black)



18-inch alloy wheel



Premium (White Cream)



Bi-function projection headlamp
4.2-inch color LCD cluster

Dark chrome radiator grille /
Clear type LED Daytime Running Light
(with positioning function)
Manual air conditioning

Bulb rear lamp
Audio system (6-speaker, Radio, MP3, USB,
Bluetooth hands-free)

Exterior mirror (heating, power adjustment,
power-folding, LED turn signal lamp)
2-way power-adjustable driver's lumbar support

Shift By Wire
Cruise control / Speed limiter



Door pocket lighting (front)
Heated steering wheel

Roof rack
Proximity key with push-button start

Heated front seat
Rear seat air vent

Leather-upholstered steering wheel
Power passenger's window with
pinch protection

Ventilated front seat
Parking Distance Warning-Forward / Reverse

* Hybrid Modern models come standard with automatic dual-zone air conditioning and an 8.0-inch touchscreen.
* The specifications in this brochure may vary by model and options included. For detailed specifications, please refer to the price list catalogue for the relevant month.

* The specifications in this brochure may vary by model and options included. For detailed specifications, please refer to the price list catalogue for the relevant month.

Inspiration



19-inch alloy wheel



Inspiration (Amazon Gray)



MFR LED headlights
(includes hidden daytime running lights)
Ambient lighting (base of navigation screen,
base of console, base of door; 64 colors)

Silver front skid plate
10.25-inch infotainment system (BlueLink,
phone projection, Bluetooth hands-free,
Hyundai CarPay)

Silver front skid plate
Dual-zone full automatic air conditioning
(includes auto defog system, fine particle
sensor, air cleaning mode, Multi-Air mode,
and After-Blow function)

Gloss black B/C pillar garnish
Integrated Memory System

Passenger's seat walk-in device
Heated rear seat

H Genuine Accessories

H Genuine Accessories are the perfect option for those seeking an entirely new level of customization. These parts offer solutions for diverse lifestyles, from convenience features for families to leisure products and pet packages.

LED lighting package



LED tailgate lamp (touch-activated)



LED Overhead console lamp



LED Luggage lamp



LED Sunvisor lamp / LED Room lamp



LED Door spot lamp

Protection mat package



First row floor mat



Second row floor mat



Luggage mat



Luggage screen



Luggage net

Luggage package

Side step



PET I



Harness (Small / Medium) / Safety belt tether,
ISOFIX seatbelt(Light Violet / Dark Mint /
Navy / Gold Beige)

PET II



Passenger seat cover /
Covers for the second row seat

Built-in air purifier



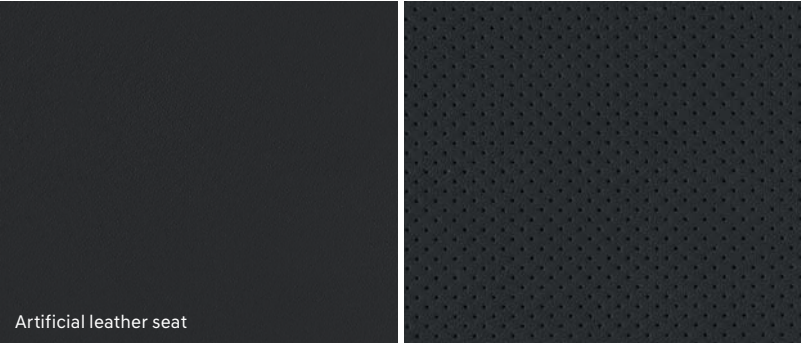
Infrared knee warmer



* Protection mat package and PET II are not available for the Hybrid model.
* H Genuine Accessories product aftermarket retailers : H Genuine Accessories Mall (Hgenuinemall.com) * The available trim may vary depending on the H Genuine Accessories package.
* Pet packages are available as optional extras when purchasing a TUCSON. For further information, please refer to the price list for the month of purchase.

Interior colors

Black one-tone Artificial leather seat

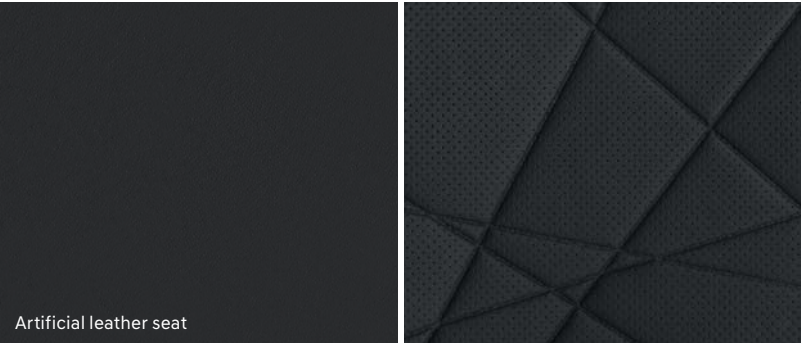


Indigo one-tone Leather seat



Black one-tone Artificial leather seat

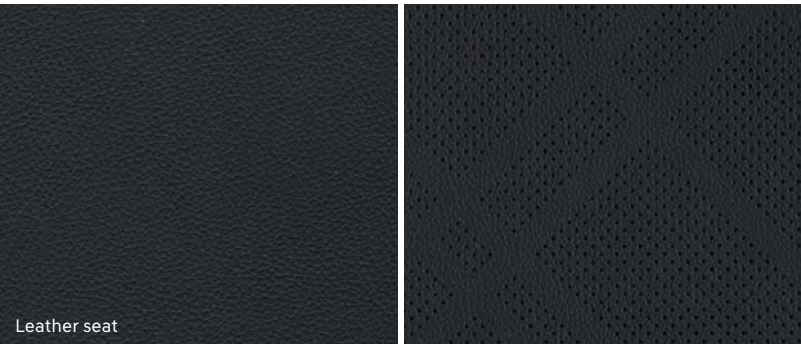
Available when the Modern Interior Design I is selected.



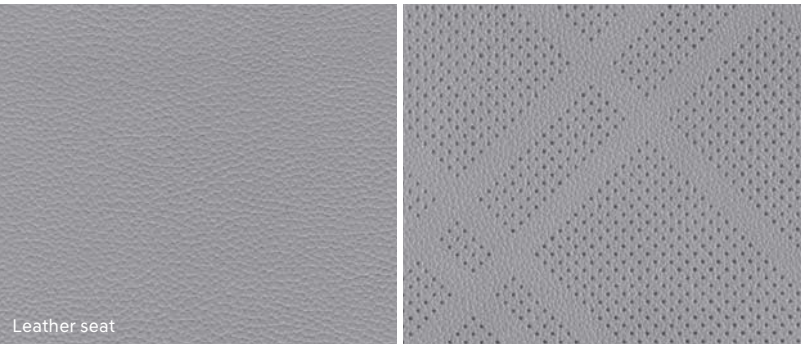
Brown Leather seat



Black one-tone Leather seat



Gray Leather seat



* Vehicle colors presented here may differ from actual appearance.

* Vehicle colors presented here may differ from actual appearance.

Exterior colors

White Cream (TW3)

Shimmering Silver (R2T)

Titan Gray (R4G)

Amazon Gray (A5G)

Phantom Black (TCM)

Crimson Red (YP6)

Color combination chart

Interior \ Exterior	White Cream (TW3)	Shimmering Silver (R2T)	Titan Gray (R4G)	Amazon Gray (A5G)	Phantom Black (TCM)	Crimson Red (YP6)
Black one-tone (Artificial leather seat)	●	●	●	●	●	●
Black one-tone (Leather seat)	●	●	●	●	●	●
Indigo one-tone (Leather seat)	●	●	●	-	●	-
Brown (Leather seat)	●	●	●	●	●	-
Gray (Leather seat)	●	●	●	●	●	●

* Vehicle colors presented here may differ from actual appearance.

Dimensions

Overall Height
1,665

Wheel Tread, Front 1,620 (1,615)

Overall Width 1,865

Wheel Base 2,755

Overall Length 4,630

Wheel Tread, Rear 1,627 (1,622)

Unit : mm

* Track width was measured with 18- and 19-inch wheels.

Specifications

Classification	Smartstream Gasoline 1.6 Turbo	Smartstream Diesel 2.0	Smartstream Gasoline 1.6 Turbo Hybrid	Model	Displacement (cc)	Unladen Vehicle Weight (kg)	Tire (Inch)	Fuel efficiency reported to the government (km/l)				
								Combined	City	Highway	CO ₂ emissions (g/km)	Grade
Overall Length (mm)	4,630	←	←	Smartstream G1.6T 2WD (7-DCT)	1,598 ↑	1,495 1,525	17 / 18 19	12.5 12.0	11.5 11.1	13.8 13.2	133 139	3 ↑
Overall Width (mm)	1,865	←	←	Smartstream G1.6T 2WD (7-DCT) + Built-in cam	1,598 ↑	1,505 1,525	18 19	12.3 12.0	11.3 11.1	13.6 13.2	136 139	3 ↑
Overall Height (mm)	1,665	←	←	Smartstream G1.6T AWD (7-DCT)	1,598 ↑	1,565 1,595	17 / 18 19	11.6 11.0	10.8 10.2	12.7 12.0	145 153	3 4
Wheel Base (mm)	2,755	←	←	Smartstream G1.6T AWD (7-DCT) + Built-in cam	1,598 ↑	1,575 1,595	18 19	11.3 11.0	10.5 10.2	12.4 12.0	148 153	4 ↑
Wheel Tread, Front (mm)	1,620 (1,615)	←	←	Smartstream D2.0 2WD (8-speed A/T)	1,998 ↑	1,590 1,600	17 18	14.8 14.3	13.5 12.9	16.7 16.3	128 133	2 ↑
Wheel Tread, Rear (mm)	1,627 (1,622)	←	←	Smartstream D2.0 2WD (8-speed A/T) + Built-in cam	1,998 ↑	1,600 1,620	18 19	14.2 13.9	12.9 12.7	16.0 15.6	134 137	2 ↑
Engine type	Smartstream G1.6T	Smartstream D2.0	Smartstream G1.6T Hybrid	Smartstream D2.0 AWD (8-speed A/T)	1,998 ↑	1,665 1,695	17 / 18 19	13.3 13.0	11.9 11.7	15.5 14.8	144 148	3 ↑
Displacement (cc)	1,598	1,998	1,598	Smartstream D2.0 AWD (8-speed A/T) + Built-in cam	1,998 ↑	1,675 1,695	18 19	13.2 13.0	11.7 11.7	15.4 14.8	145 148	3 ↑
Max. Power (PS/rpm)	180 / 5,500	186 / 4,000	180 / 5,500	Smartstream D2.0 AWD (8-speed A/T) + Built-in cam	1,998 ↑	1,590 1,590	17 / 18 18	16.2 15.8	16.9 16.3	15.3 15.2	99 102	1 2
Max. Torque (kg-m/rpm)	27.0 / 1,500~4,500	42.5 / 2,000~2,750	27.0 / 1,500~4,500	Smartstream G1.6T Hybrid (6-speed A/T)	1,598	1,590	17 / 18	16.2	16.9	15.3	99	1
Fuel Tank (ℓ)	54	←	52	Smartstream G1.6T Hybrid (6-speed A/T) + Built-in cam	1,598	1,590	18	15.8	16.3	15.2	102	2
Max. Motor Power (kW)	-	-	44.2									
Max. Motor Torque (Nm)	-	-	264									
Max. System Output (PS/rpm)	-	-	230 / 5,500									

Maintain a constant speed to drive more efficiently.

-The fuel economy described above is based on the standard model and may differ during actual driving depending on road conditions, driving technique, cargo load, vehicle maintenance, and outdoor temperature. -Some of the images presented here include optional specifications, so their appearance may differ from the car you purchase. -The specifications, colors, and sources presented here may be modified to improve vehicle exterior and performance. -The engine performance described above is the "Net Number," a new measure reflecting exhaust resistance that complies with legislation enforced by Korea's Ministry of Land and Transport since 1997. It can be marginally lower than "Gross Output Number," the previous measurement. -Leather seat include some artificial leather. -Vehicle colors presented here may differ from actual appearance. -The specifications listed in this brochure may change depending on the model, and they may apply to a car fitted with optional equipment. Please refer to the appropriate price chart for additional information.

-Hyundai Motor Company sells cars only through its branches and designated dealers. Hyundai Motor Company is committed to fair trade practices, with the same price and quality of vehicles nationwide. -Use of non-genuine parts (such as engine oil and transmission oil) or poor quality fuel may severely damage the vehicle. -For more information about the new technologies and specifications described in this brochure, please refer to a user's manual.

TUCSON Hybrid warranties	
Warranty for Hybrid parts	10-year/200,000-kilometer warranty - Electric motor, hybrid high-voltage battery HPCU (Hybrid Power Control Unit)
Guaranteed vehicle trade-in rate program	Customers may choose to apply for this program upon purchasing a vehicle. It focuses on customer satisfaction by providing a high guaranteed vehicle trade-in rate for customers who purchase another vehicle from Hyundai Motor within three years of applying for program membership. - Eligibility: first-time purchasing customers (does not apply to: Hyundai Motor employees, customers who are not first-time purchasers, entrepreneurs, procurement-related purchasers, etc.) - Standard guaranteed trade-in rate: under one year: 77%, under two years: 70%, under three years: 64%

※ The benefits offered through the warranties above may be subject to change.
※ Contact a branch or dealership for details.

Bluelink The advanced technology of Hyundai's BlueLink system helps keep both the driver and the vehicle safe in any situation. BlueLink is always there to keep you safe, regardless of the location or time of day. Experience the unique joy of safe and comfortable driving.

Remote control
In the extremely hot summer or cold winter months, you can link your smartphone to the air conditioner or heater to set and control the temperature inside the vehicle. Enjoy a pleasant driving experience with BlueLink.

Safety security
The BlueLink Center works 24 hours a day, 365 days a year. If an airbag opens due to an accident, the Center automatically detects your location and takes appropriate actions according to the situation, such as contacting the police, ambulance, insurance company, etc.

Vehicle management
Services include real-time trouble detection while the vehicle is running and regular vehicle inspections on pre-arranged dates. In the event of vehicle trouble, immediate professional consulting is available, and you may conveniently make reservations for repair at the time and location of your choice.

Navigation
This function enables the driver to conveniently search for destinations through voice command and suggests optimum routes based on an independent analysis of real-time traffic information. The driver can search a database of up-to-date information to find even newly created destinations.

*Free of charge for five years for customers who have purchased a vehicle and are applying for BlueLink membership for the first time: Remote control, Safety security, Vehicle management, Navigation.
* Inquiries: Blue Link Kakao Talk Customer Service Center (enter "Blue Link" in Kakao Talk search screen and add as friend)

Hyundai Motor Company's SNSs



Naver Post

post.naver.com/abouthyundai



Facebook

facebook.com/AboutHyundai



Instagram

instagram.com/about_hyundai



YouTube

youtube.com/user/AboutHyundai



KakaoStory

story.kakao.com/ch/hyundai



Twitter

twitter.com/About_Hyundai

Hyundai Motor Company website : hyundai.com **Customer Center :** 080-600-6000

Inquiries for Purchase



We promise to provide uniform prices and consistent services of the highest quality at all our branches and dealerships.



Hyundai Motor Company ranked first for the seventh consecutive year in 2020 across all segments (semi-mid-size, mid-size, full-size, and RVs)



2020 Korea Customer Satisfaction Index (KCSI)
Ranked 1st in the sedan sector for 27 consecutive years
Ranked 1st in the RV sector for 17 consecutive years



2020 KS-QEI (Korea Standard-Quality Excellence Index)
Ranked first in 10 categories
(all related to: passenger car, SUV, and car repair)

* The images used in this brochure are intended to enhance customers' understanding and are focused on high-end models and optional features.

* The features introduced in this brochure may vary from model to model. Please refer to the monthly price table for more detailed features of each model.